

QM1100

FULLY AUTOMATED TABLETOP PICK & PLACE MACHINE



Desktop Pick & Place machine intended for small batches & SMT prototype projects.

Features and Benefits

- Teledyne DALSA Vision System
- Two Head for pick up
- Static Fixture max size 12"(304mm)×12"(304mm) capable of holding one JEDEC Tray once PCB.
- Operates with Economical QM-PA01 feeders, front feeder set included, Rear QM-PA01 optional
- One up looking camera for part inspection before placement.
- One Down looking camera for Fiducial Recognition & feeder set up.
- Placement rate 2,000 Parts Per Hour
- Two day Training Session at our California office
- Paste dispenser option available, for Auto dispensing
- Dual linear guide way with Ball Screws.
- Two day training session at SMTmax included



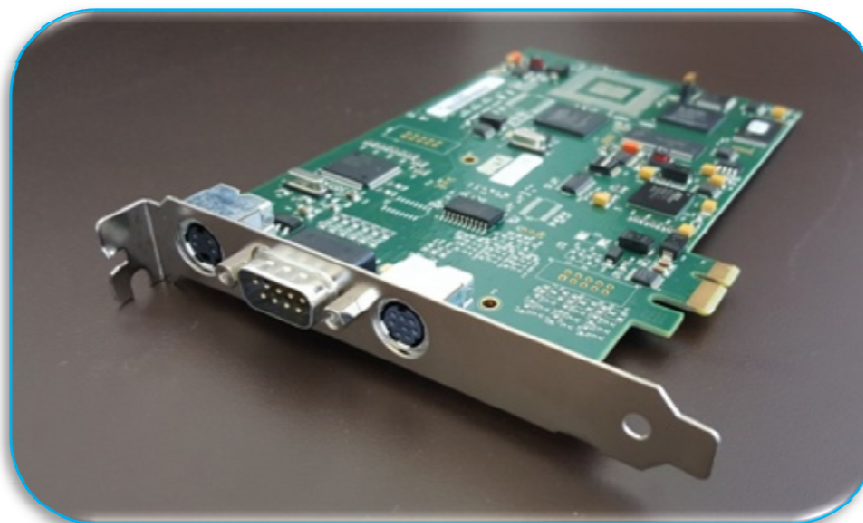
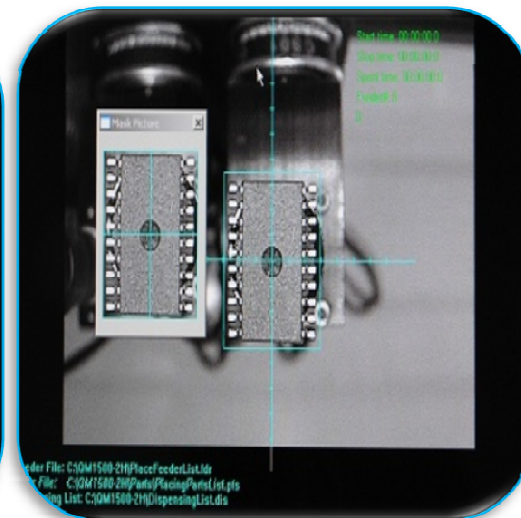
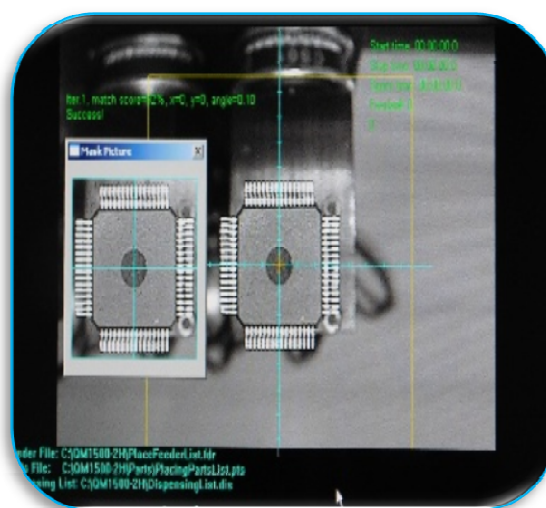
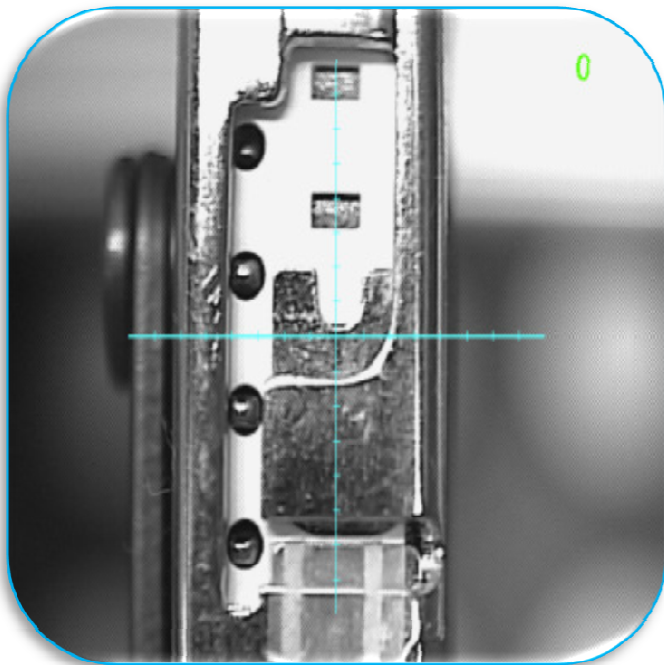
The QM1100 is a fully automated pick & place machine intended for SMT manufacturing and producing prototypes, developed by SMTmax. This remarkable, highly flexible and economical pick & place machine provides the need for a machine that produces small batches & prototypes for the SMT assembly industry.

QM1100

Fully Automated Tabletop Pick & Place Machine

High precision with Dalsa Vision system and camera

The QM1100 is standard equipped with the latest generation Dalsa Vision system, which gives you repeatability and alignment correction before placement. One down looking camera is standard for fiducial recognition and feeder alignment. One up looking camera is standard for part correction down to 0402. A second camera with larger lens for placement of larger components is optional.

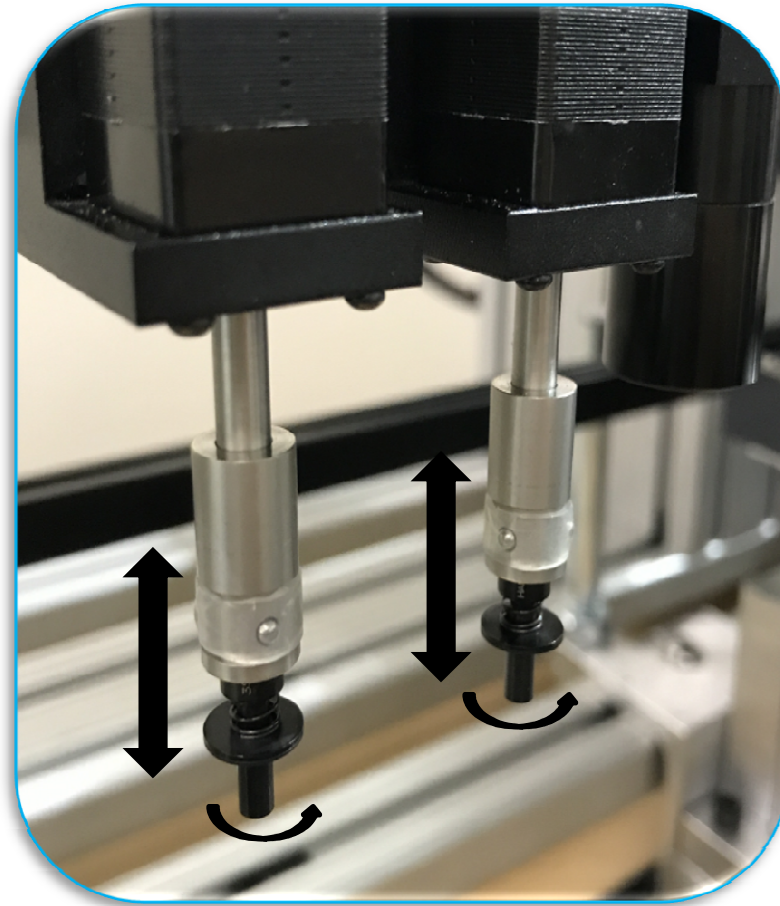
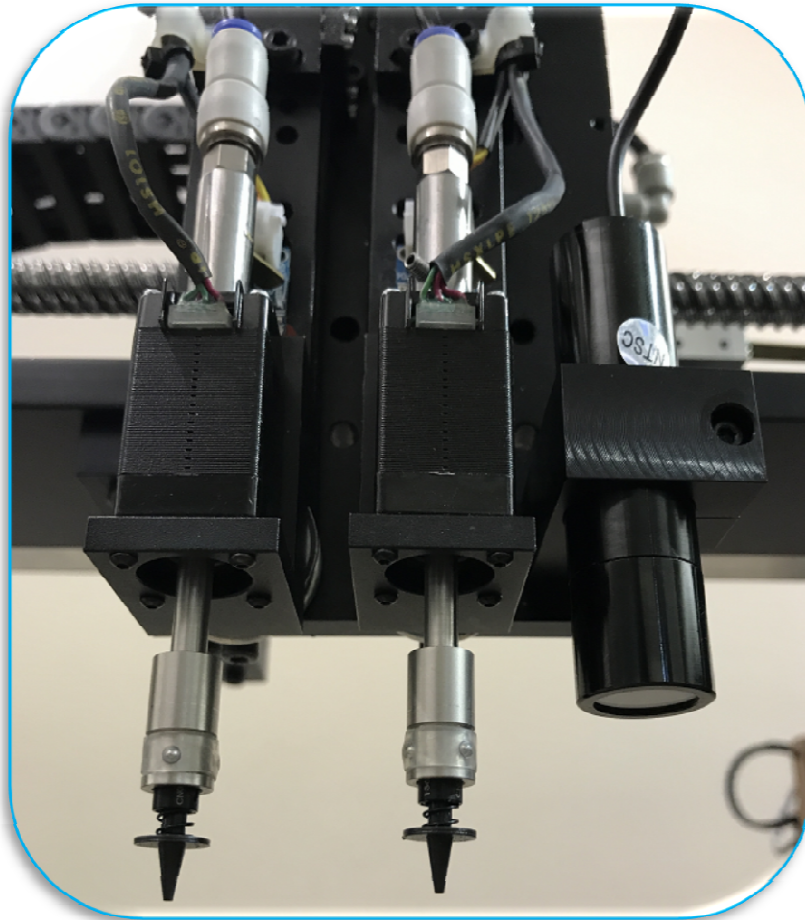


QM1100

Fully Automated Tabletop Pick & Place Machine

Two heads for pick and place

Two Placement head's with individual Z-axis control, each head uses 5 different size nozzles for small to large components.

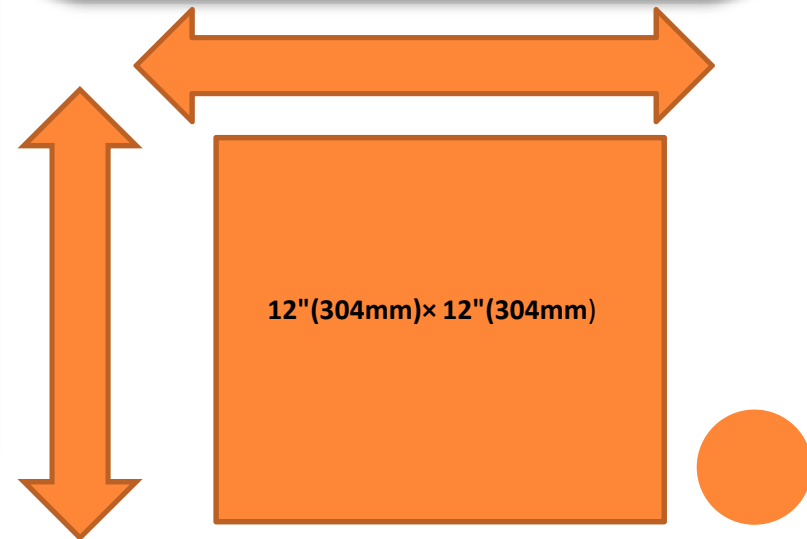
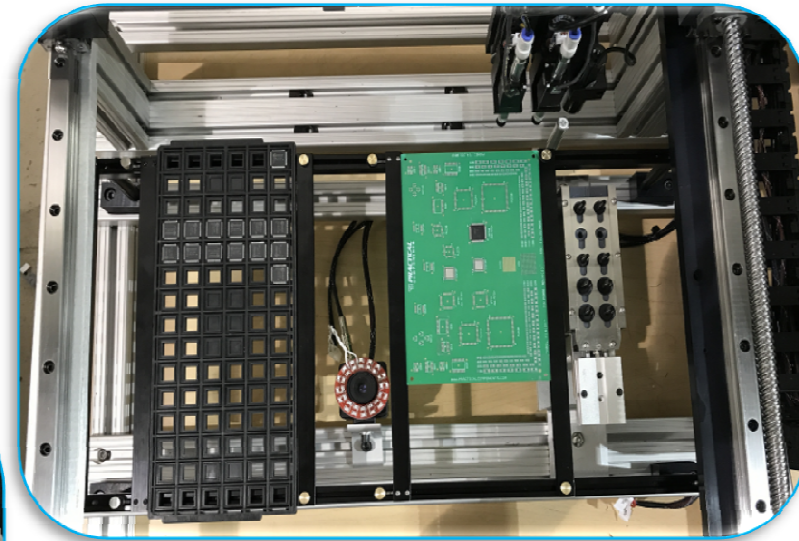
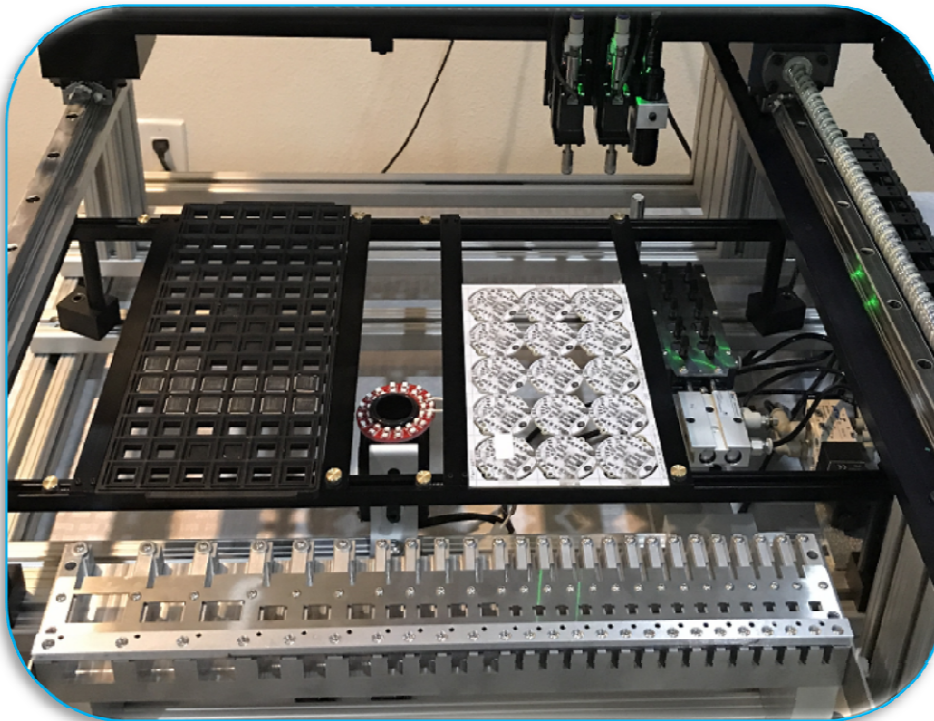


QM1100

Fully Automated Tabletop Pick & Place Machine

Static PCB & JEDEC Tray Fixture

Static Fixture standard equipped with maximum adjusting size 12"(304mm)× 12"(304mm) and minimum size of 1"(25mm) x 1"(25mm) Dual arms capable of holding one JEDEC Tray once PCB depending on overall PCB board size. Maximum head travel area 13"(330mm)×15"(381mm) In line Conveyor system is not optional.



QM1100

Fully Automated Tabletop Pick & Place Machine

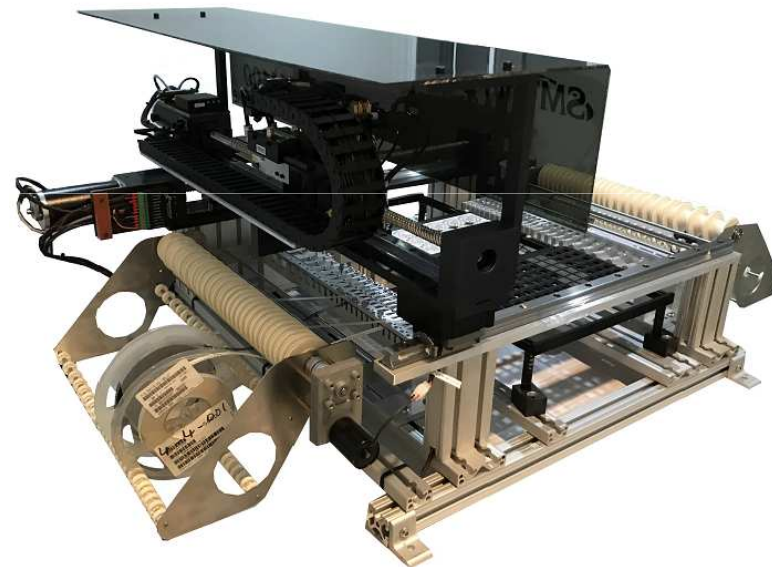
QM-PA01 Auto Pull and Peel feeders

The QM1100 is equipped with QM-PA01 pulling feeders that are mounted on the front side of the machine they will include 14x8mm, 4x12mm, 2x16mm, 2x24mm, 1x32mm. An additional QM-PA01 kit is optional and can be mounted on the rear side.



QM-PA01 Included that comes with

14 x 8mm
4 x 12mm
3 x 16mm
2 x 24mm
1 x 32mm



QM-PA01 in rear side is optional

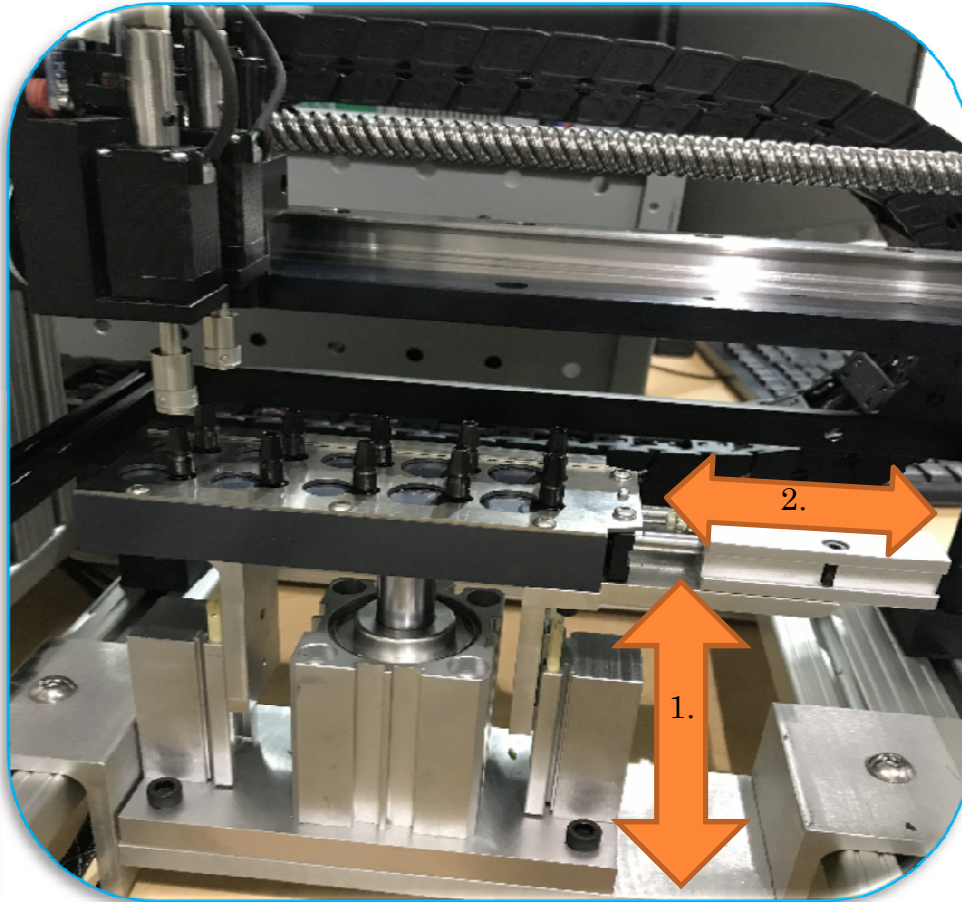
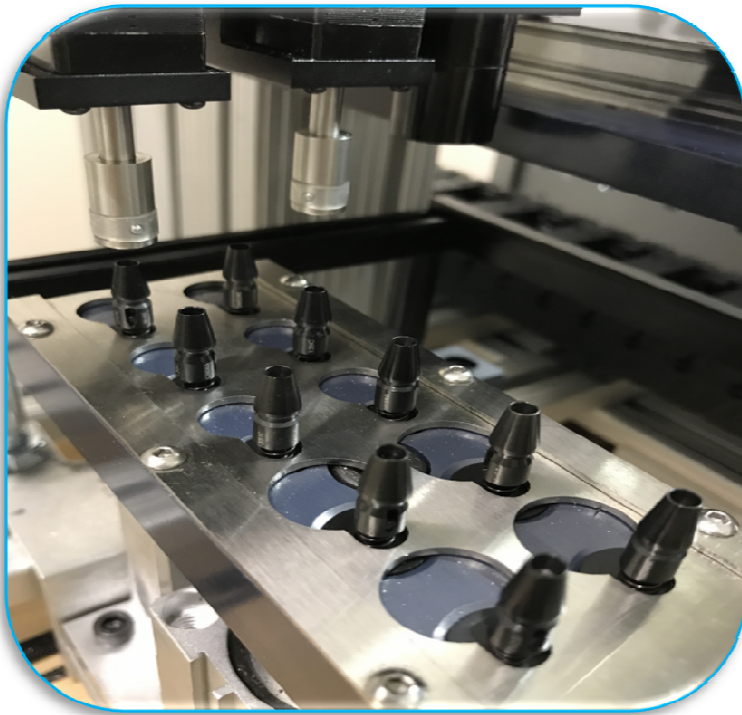


QM1100

Fully Automated Tabletop Pick & Place Machine

Automatic nozzle Changer (optional)

The QM1100 is standard equipped with 10 SMT nozzles ranging from 0.5mm up to 5.0mm. The nozzle changer fixture is designed for automatic nozzle exchanging and is highly recommended for placement of difference size components. Programmable by using the down looking camera and software to automatically place back current nozzle and pick up required nozzle for larger or smaller component.



Step 1. Rises up

Step 2. Slides open

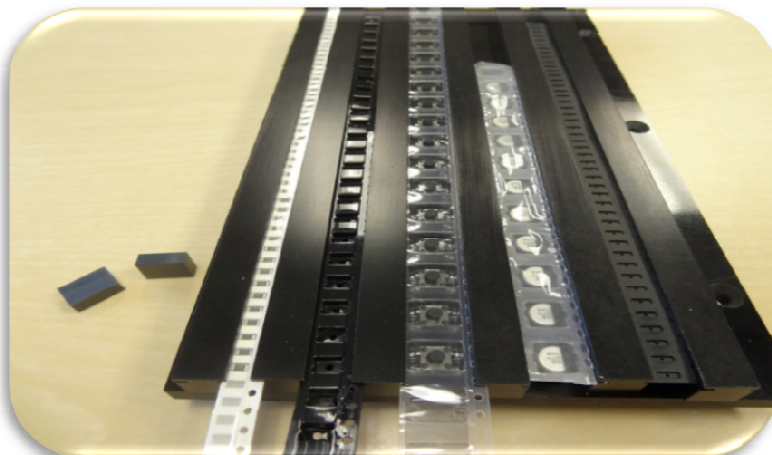
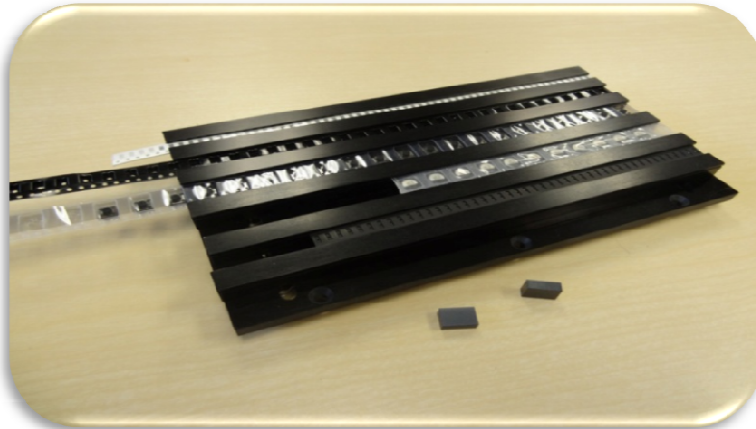


QM1100

Fully Automated Tabletop Pick & Place Machine

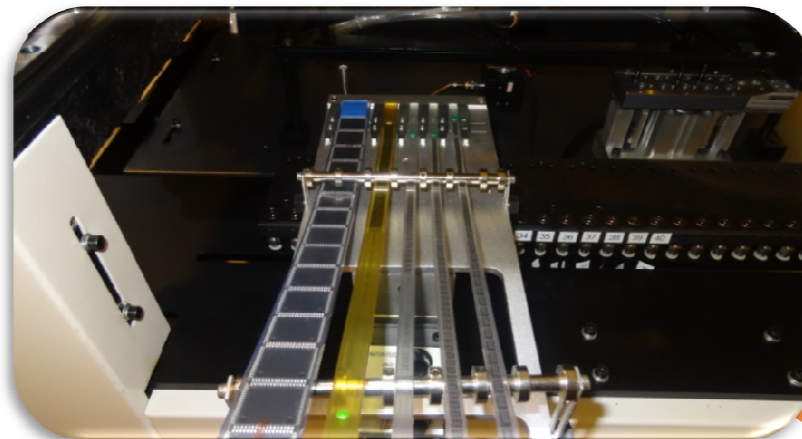
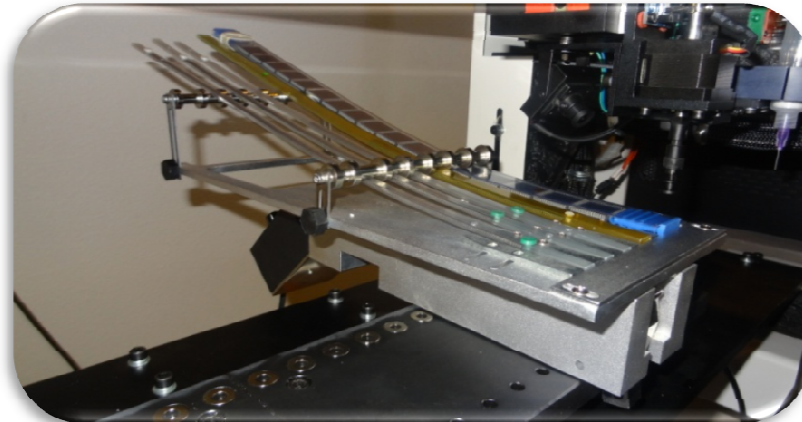
Manual Tape strip feeder (Optional)

For small strips of SMD tape we offer a five channel tape strip feeder that can be adjusted to any width of tape.



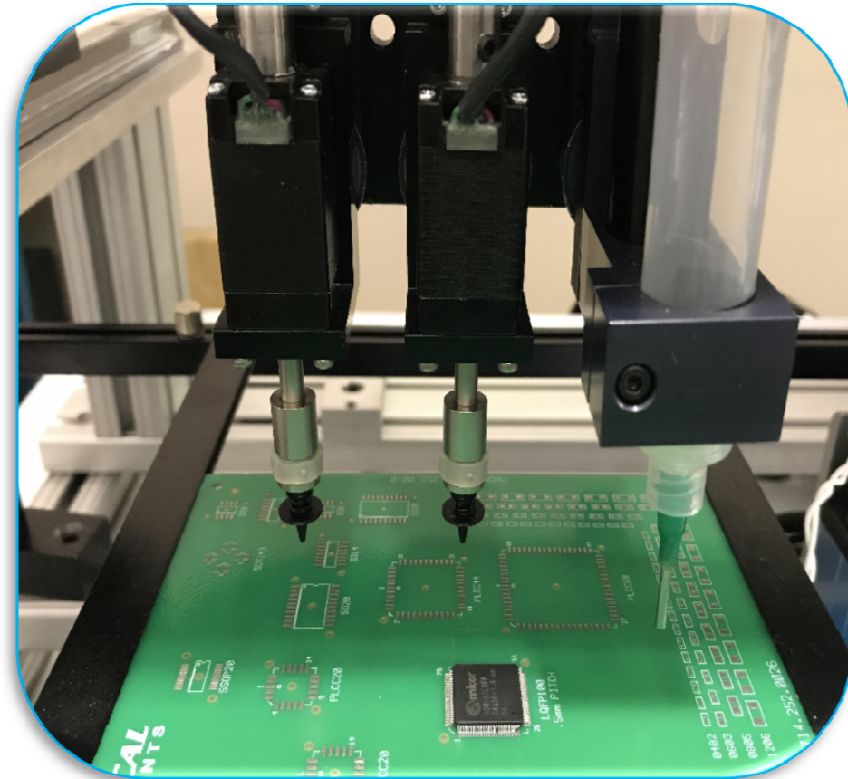
Vibratory Feeder (Optional)

For SMD components package in plastic tube, vibratory feeder can hold up to five tubes depending on tube width, each channel adjustable to any size.



Fully Automated Tabletop Pick & Place Machine

Dispensing head option for applying solder paste or SMD-glue, controlled by the SMTmax software! The PCB's Gerber file can be converted into a dispensing list file providing all dispense positions, can also be programmed one at a time by teach mode, recommended for prototyping. Dispensing can be done directly from the 10cc syringe by time pressure.



- Dispense Dots
- Dispense lines
- Gerber file converter with software
- 10 different size needles
- 10cc barrel

QM1100

Fully Automated Tabletop Pick & Place Machine

Specifications:

2 pick and place head's
Standard

2,00 PPH Placement Rate

0.0005" resolution X and Y
axis

0.001" positioning
resolution, 0.045°
rotational resolution

0402 Minimum
Component Size

Computer vision
automatic centering
system for IC's (SOP, QFP,
BGA) and better
placement of small parts
included

12" (304mm) × 12" (304mm)
Maximum PCB fixture

QMPA-01
14x8mm, 4x12mm,
2x16mm, 2x24mm,
1x32mm

X & Y Axis standard with
servo motors with
encoder

1 JEDEC tray holder

12 month full factory
warranty - parts & labor

110V AC 60Hz, or 220 V
AC, 50Hz, 750 watts
electrical

37" w x 38" d x 19" h

MADE IN USA



SMTmax Corporation
5675 Kimball Ct
Chino, CA 91710
Phone: 909-393-8700
www.smtmax.com

