

QM3000

FULLY AUTOMATED PICK & PLACE MACHINE



A remarkable and economical Pick & Place machine intended for small to medium batches & SMT prototype projects.

Features and Benefits

- Teledyne DALSA Vision System
- Dual Head for pick up (3rd head optional)
- PCB Fixture max size 18"(457mm)×12"(304mm) capable of holding One JEDEC Tray once PCB. (Internal Conveyor optional)
- Can hold up to 56 of our 8mm air feeders maximum.
- One up looking camera for part inspection before placement.
- One Down looking camera for Fiducial Recognition & feeder set up.
- Placement rate 3,500 Parts Per Hour
- Two day Training Session included at our California office.
- Chassis made out of Cast iron

The QM3000 is a fully automated pick & place machine intended for SMT manufacturing and producing prototypes, developed by SMTmax. This highly flexible and economical pick & place machine provides the need for a machine that produces small to medium batches & prototypes for the SMT industry.

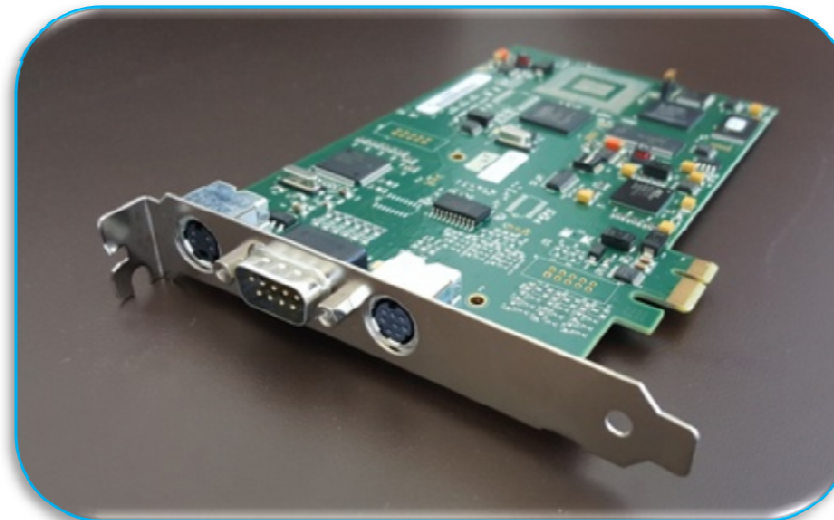
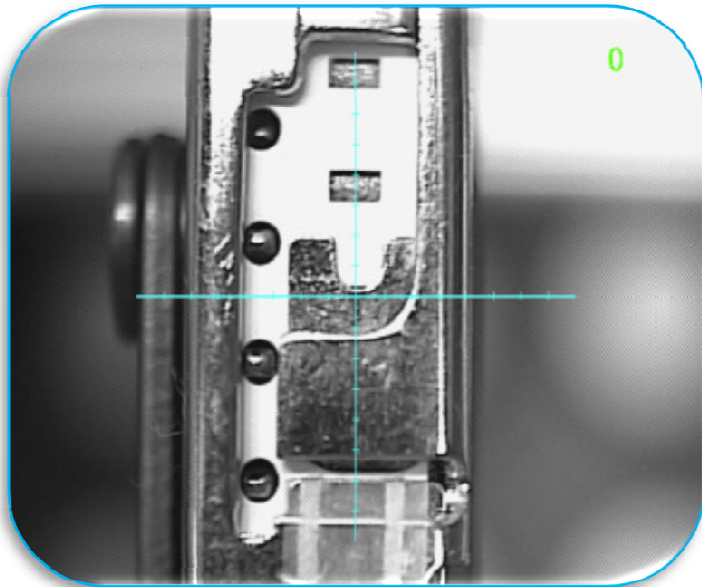
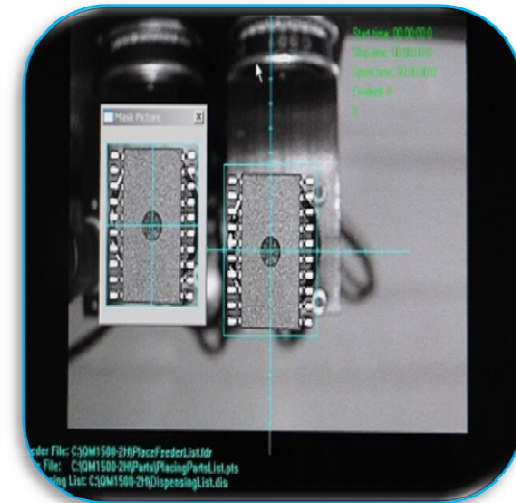
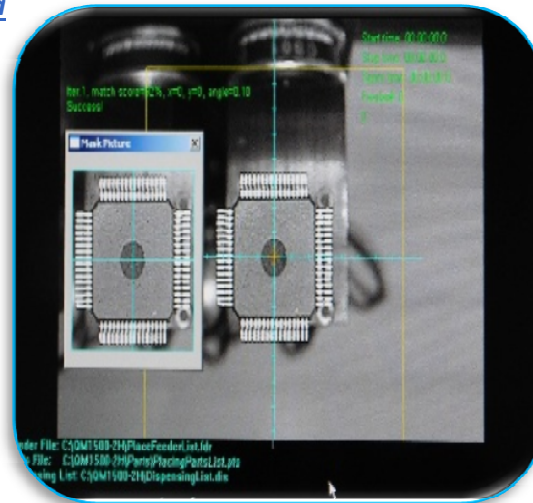


QM3000

Fully Automated Pick & Place Machine

High precision with Dalsa Vision system and camera

The QM3000 is standard equipped with the latest generation Dalsa Vision system, which gives you repeatability and alignment correction before placement. One down looking camera is standard for fiducial recognition and feeder alignment. One up looking camera is standard for part correction down to 0201. A second camera with larger lens for placement of large fine pitch components is optional.

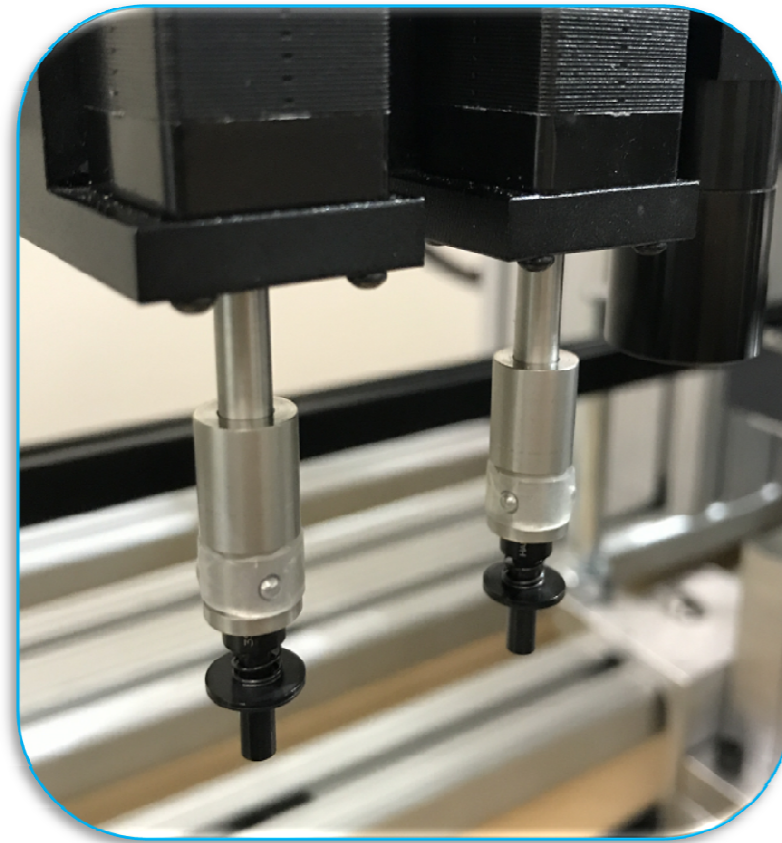
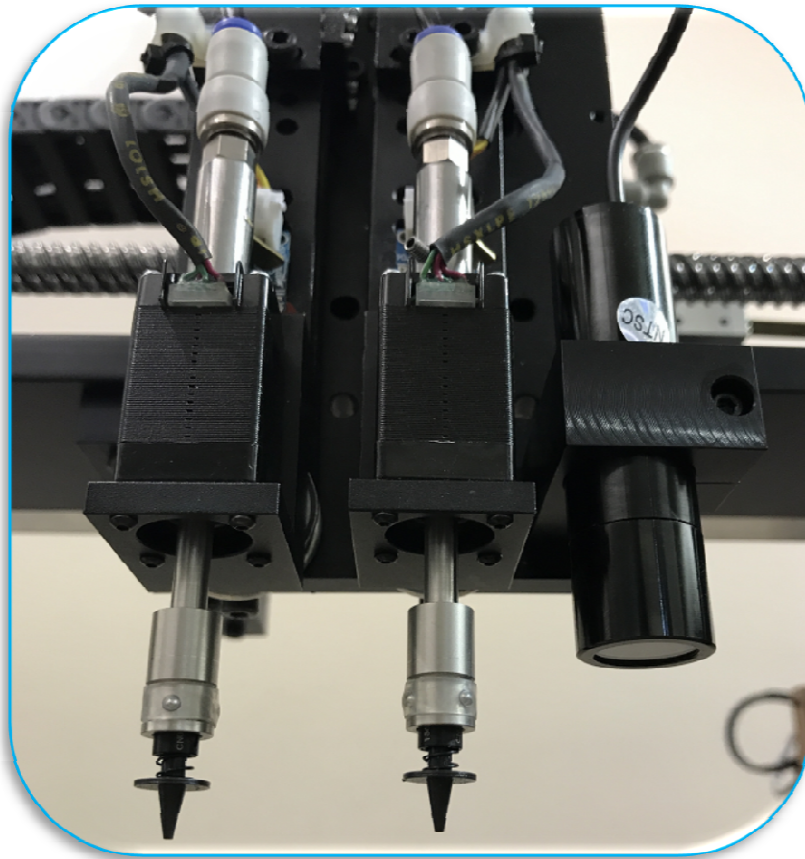


QM3000

Fully Automated Pick & Place Machine

Two Head Placement

Two Placement head with individual Z-axis control. 3rd
Head optional

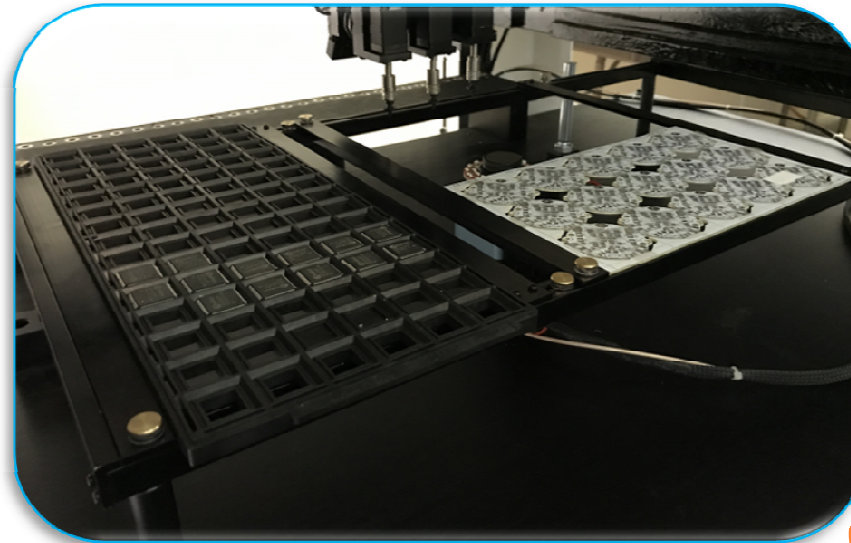
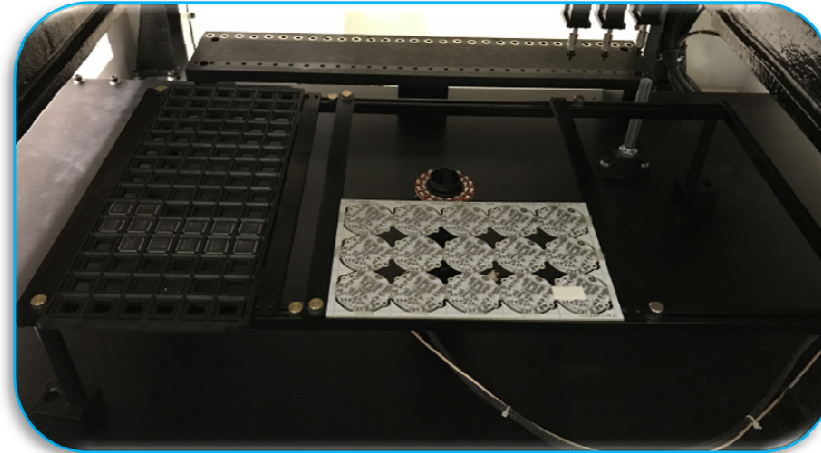
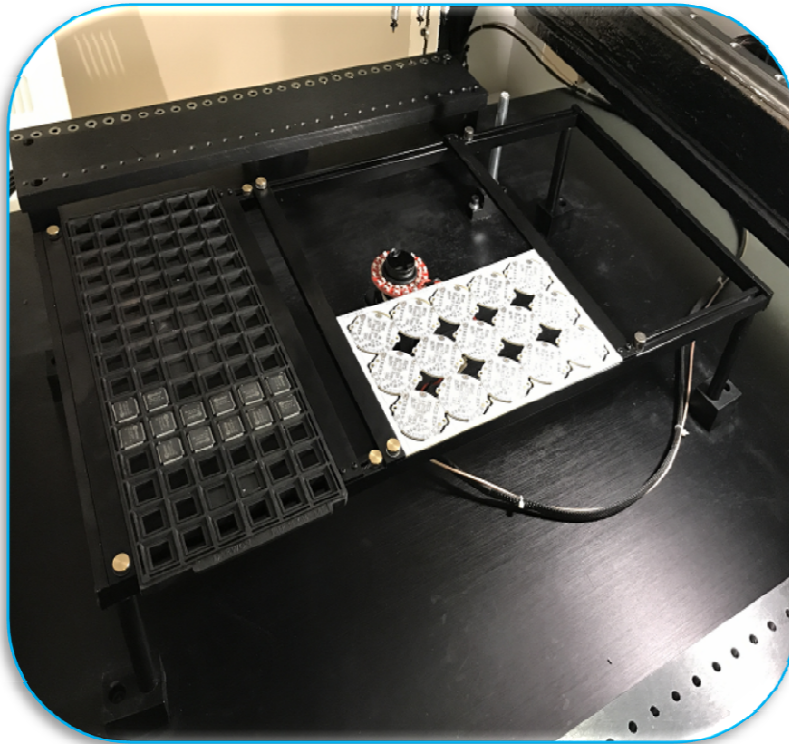


QM3000

Fully Automated Pick & Place Machine

Static PCB & JEDEC Tray Fixture

Static Fixture standard with maximum adjusting size 18"(457mm)× 12"(304mm) and minimum size of 1"(25mm) x 1"(25mm) Dual arms capable of holding one JEDEC Tray once PCB depending on overall SMT board size. Maximum head travel area 20"(500mm)×18"(460mm) In line Conveyor system is optional.



QM3000

Fully Automated Pick & Place Machine

Advance Air Actuated Feeder System

Can hold up to 55 of our 8mm feeders, 24 Feeder bank ports standard and mounted on the front side of the machine, 23 additional feeder bank ports optional and mounted on the rear side. Individual feeders sold separately, ranging from 8mm-56mm. Easy to remove and replace.



Yamaha CL823 0201

Yamaha CL8x2

Yamaha CL8x4



Yamaha CL24mm

Yamaha CL16mm

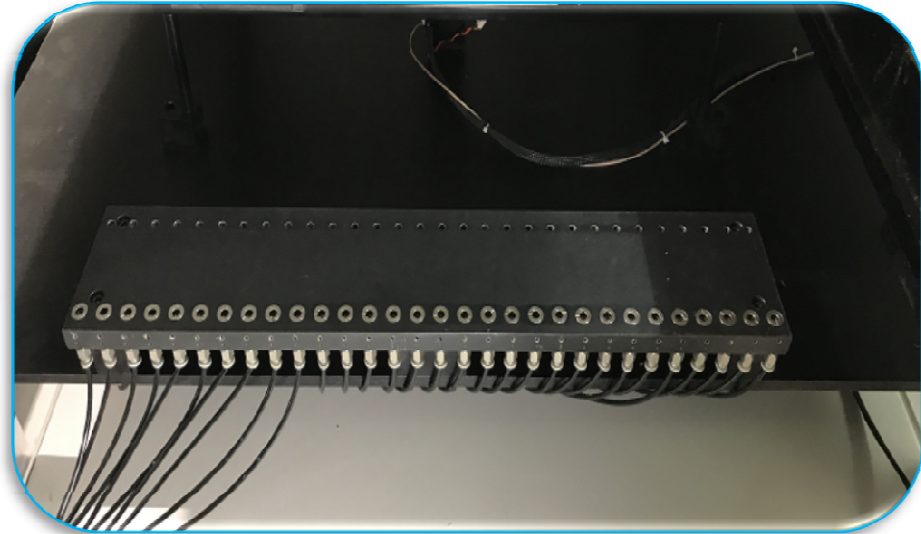
Yamaha CL12mm



Yamaha CL32mm

Yamaha CL44mm

Yamaha CL56mm

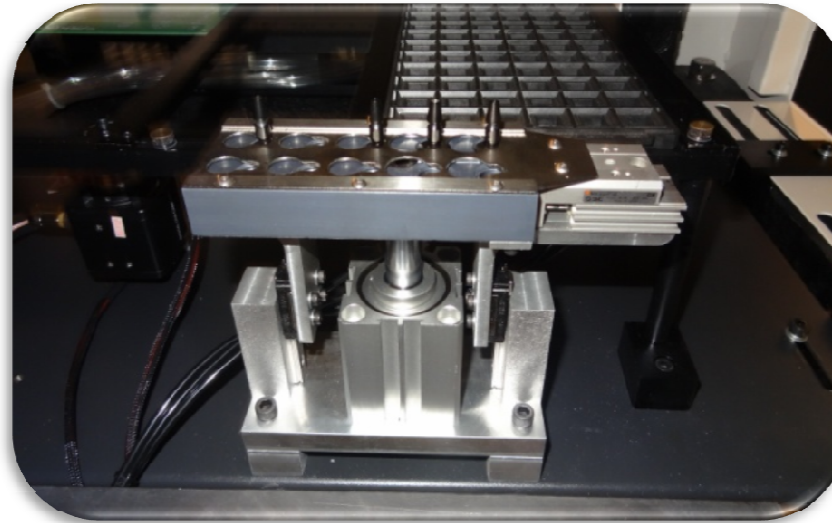
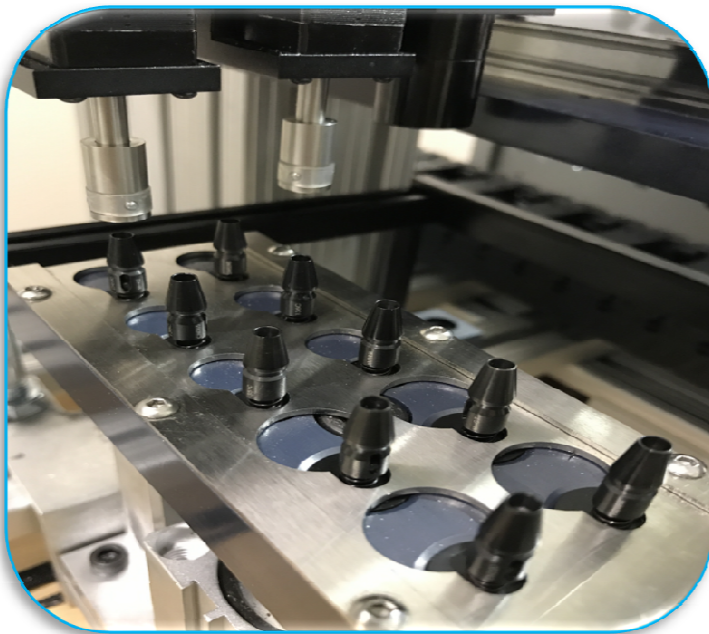


QM3000

Fully Automated Pick & Place Machine

Automatic nozzle Changer (optional)

The QM3000 is standard equipped with Five SMT nozzles ranging from 0.5mm up to 5.0mm and one nozzle stem. The nozzle changer fixture is designed for automatic nozzle exchanging and is highly recommended for placement of difference size SMT components. It can be program by using the down looking camera and software to automatically place back current nozzle and pick up required nozzle for larger or smaller component.

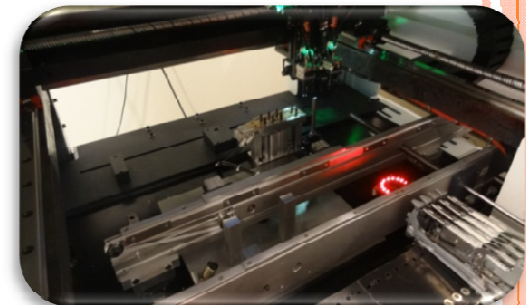
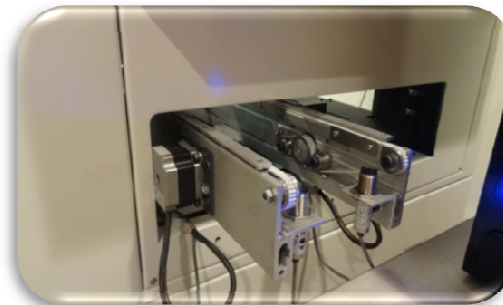
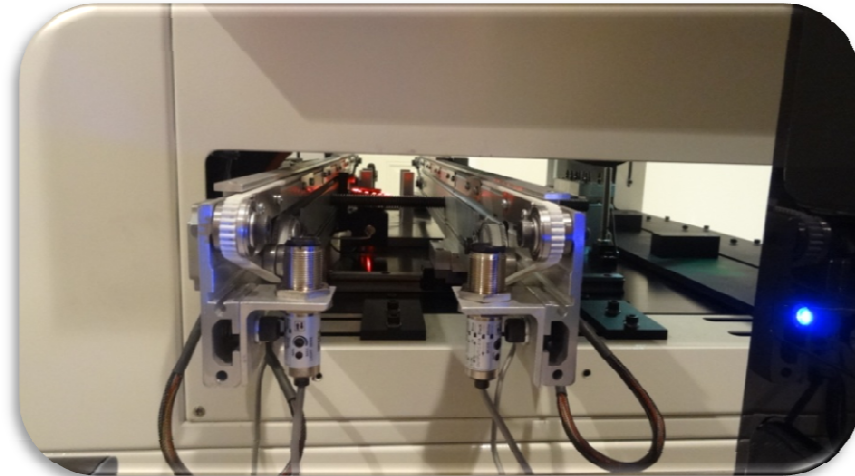
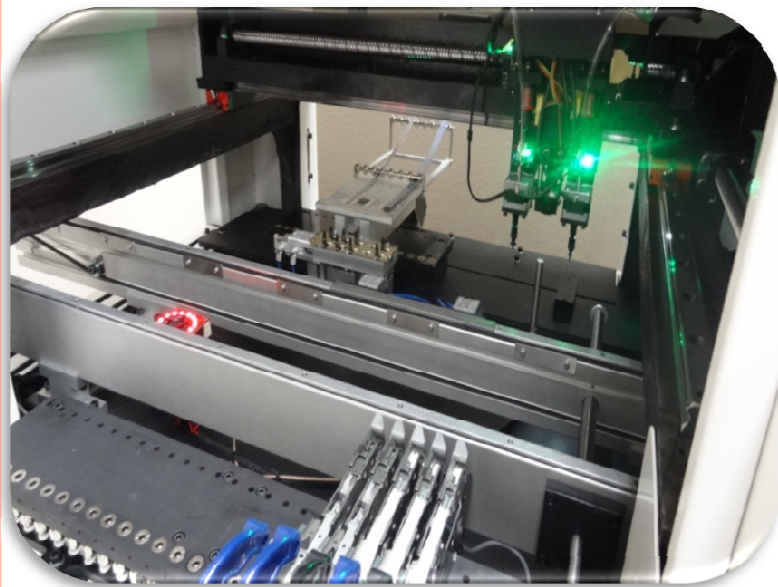


QM3000

Fully Automated Pick & Place Machine

PCB Inline Transport Conveyor (Optional)

The inline transporting conveyor is ideal for full turn key line that will allow you to link up to a inline stencil printer or inline reflow oven. PCB is inserted on the right side and will automatically convey to the center of the pick and place, after completion it will convey outside. Width is adjustable and can be opened up to 10" (254mm) and the maximum length of 18" (457mm)

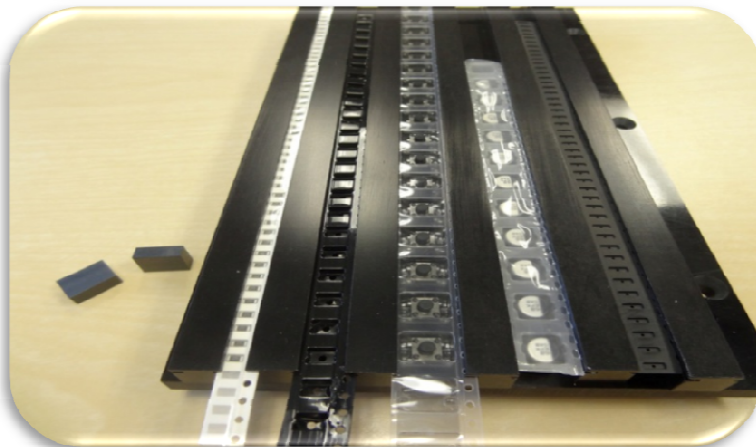
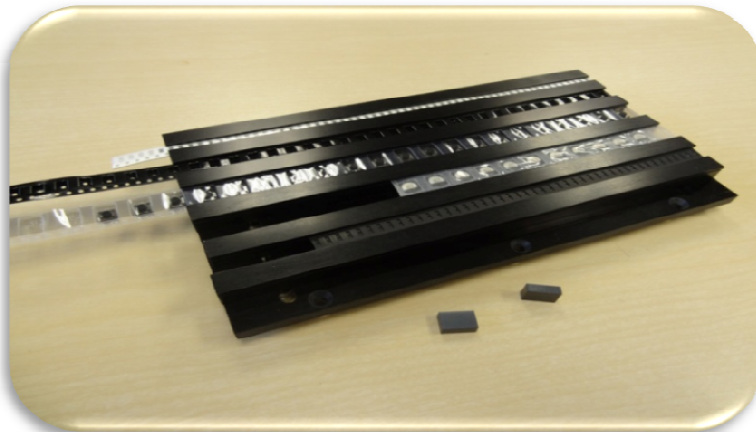


QM3000

Fully Automated Pick & Place Machine

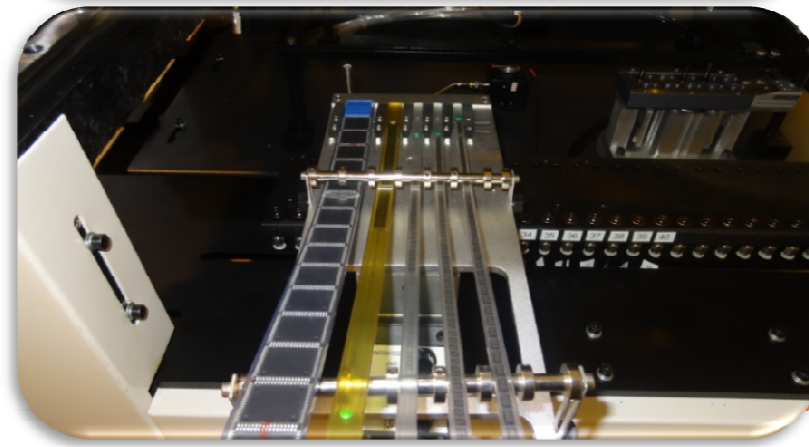
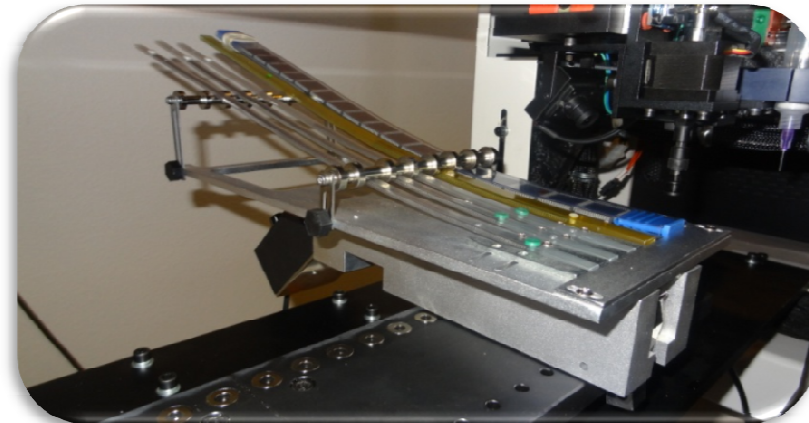
Manual Tape strip feeder (Optional)

For small strips of SMD tape we offer a five channel tape strip feeder that can be adjusted to any width of tape.



Vibratory Feeder (Optional)

For SMD components package in plastic tube, vibratory feeder can hold up to five tubes depending on tube width, each channel adjustable to any size.

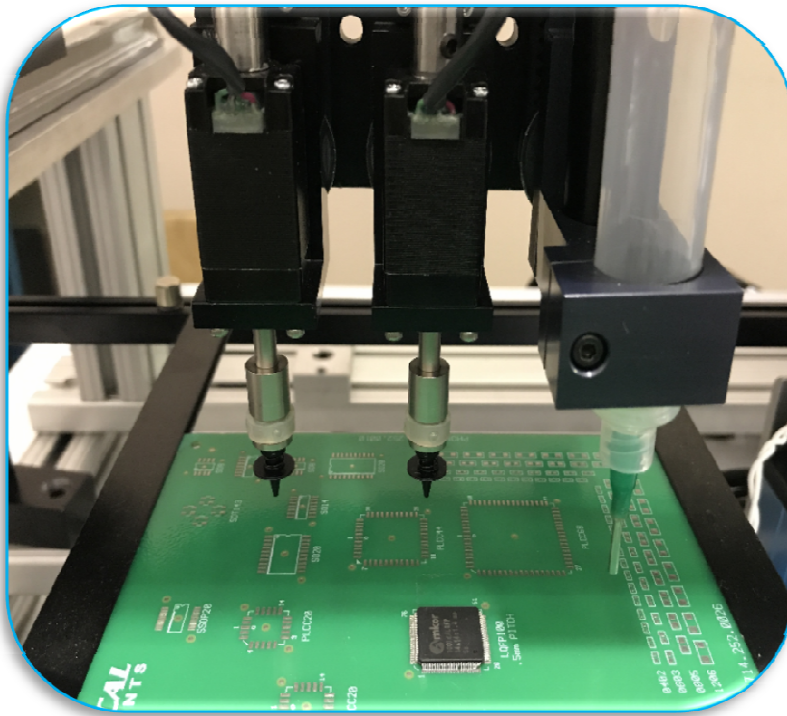


QM3000

Fully Automated Pick & Place Machine

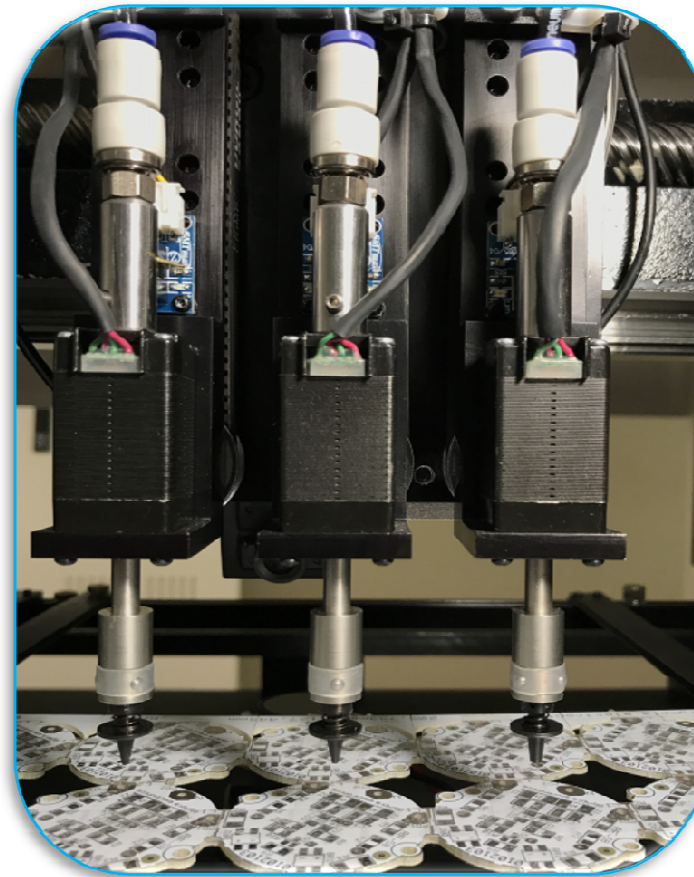
Dispensing Head (Optional)

Individual Z-axis controller Dispensing head option for applying solder paste or SMD-glue, controlled by the SMTmax software! The PCB's Gerber file can be converted into a dispensing list file providing all dispense positions, can also be programmed one at a time by teach mode, recommended for prototyping. Dispensing can be done directly from the 10cc syringe by time pressure.



Third P&P Head (Optional)

Third individual Z-axis controller Pick and place head to increase speed, up to 4,500-5,000 parts per hour.



QM3000

Fully Automated Pick & Place Machine

Specifications:

2 pick and place head
Standard

3,500 PPH Placement Rate

0.0005" resolution X and Y
axis

0.001" positioning
resolution, 0.045°
rotational resolution

0201 Minimum Component
Size

Computer vision automatic
centering system for IC's
(SOP, QFP, BGA) and better
placement of small parts
included

18"(457mm)× 12"(304mm)
Maximum PCB fixture

56 maximum air actuated
feeders capability

X & Y Axis standard with
brushless dc servo motors
with encoder

1 JEDEC tray holder

12 month full factory
warranty - parts & labor

110V AC 60Hz, or 220 V AC,
50Hz, 750 watts electrical

48" w x 40" d x 60" h

MADE IN USA



SMTmax Corporation
5675 Kimball Ct
Chino, CA 91710
Phone: 909-393-8700

www.smtmax.com

