

# QM2000

FULLY AUTOMATED TABLETOP PICK & PLACE MACHINE



A remarkable and economical Pick & Place machine intended for small batches & SMT prototype projects.

## Features and Benefits

- Teledyne DALSA Vision System
- Two pick up heads
- Static Fixture max size 20" (504mm)×12" (304mm) capable of holding one JEDEC Tray once PCB.
- Operates with pneumatic feeders ,20ports installed on the front, 20 more ports optional (rear side)
- One up looking camera for part inspection before placement.
- One Down looking camera for Fiducial Recognition & feeder set up.
- Placement rate 3,000 Parts Per Hour
- Paste dispenser option available, for auto dispensing



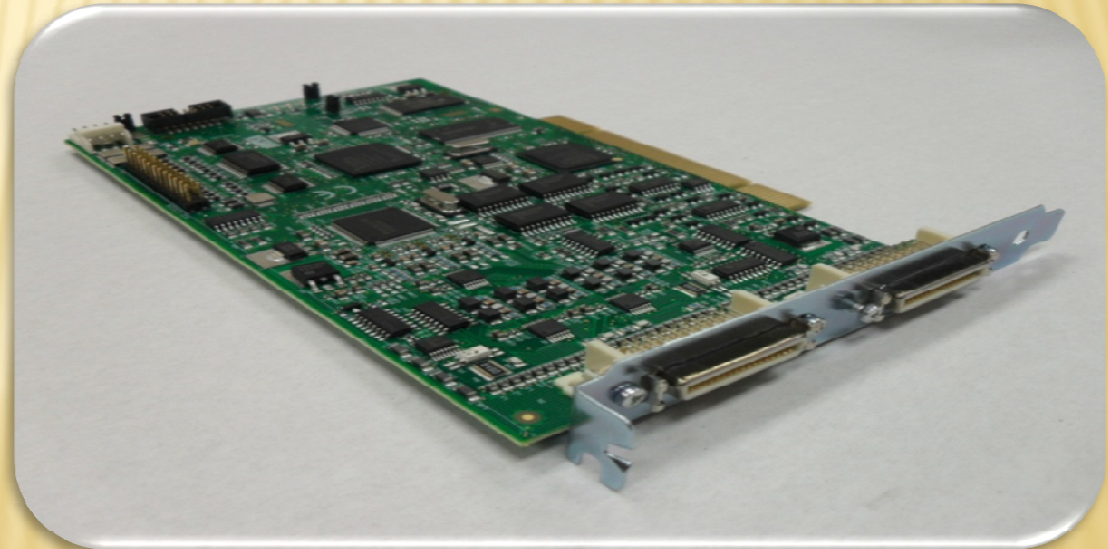
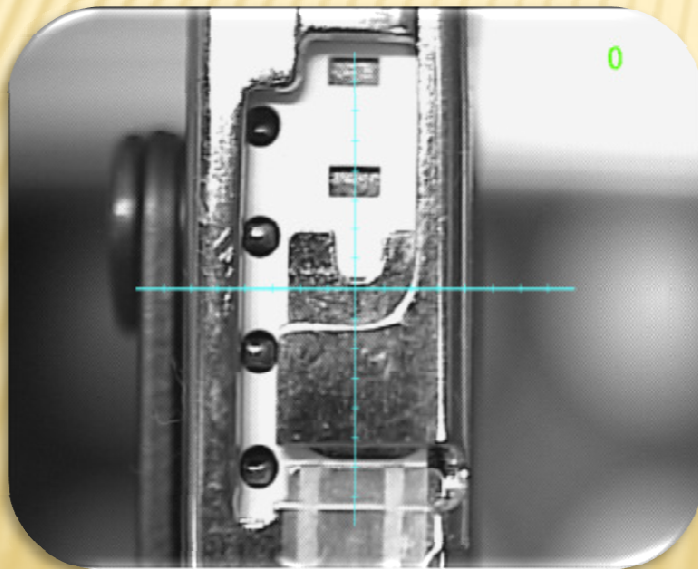
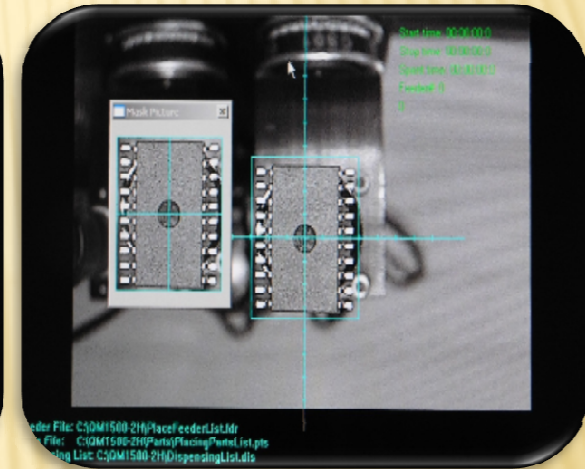
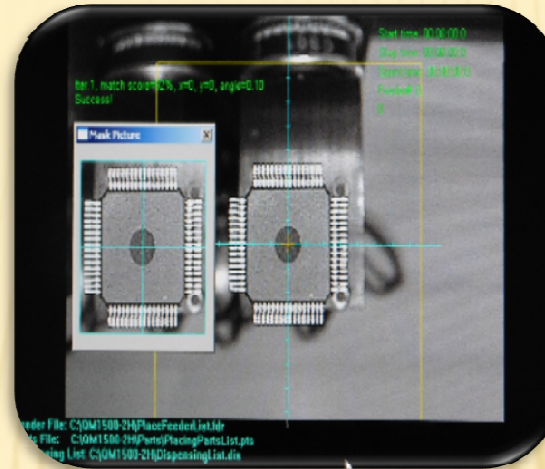
The QM2000 is a fully automated pick & place machine intended for SMT manufacturing and producing prototypes, developed by SMTmax. This remarkable, highly flexible and economical pick & place machine provides the need for a machine that produces small batches & prototypes for the SMT industry.

# QM2000

*Fully Automated Tabletop Pick & Place Machine*

## High precision with Dalsa Vision system and camera

The QM2000 is standard equipped with the latest generation Dalsa Vision system, which gives you repeatability and alignment correction before placement. One down looking camera is standard for fiducial recognition and feeder alignment. One up looking camera is standard for part correction down to 0201. A second camera with larger lens for placement of large fine pitch components is optional.



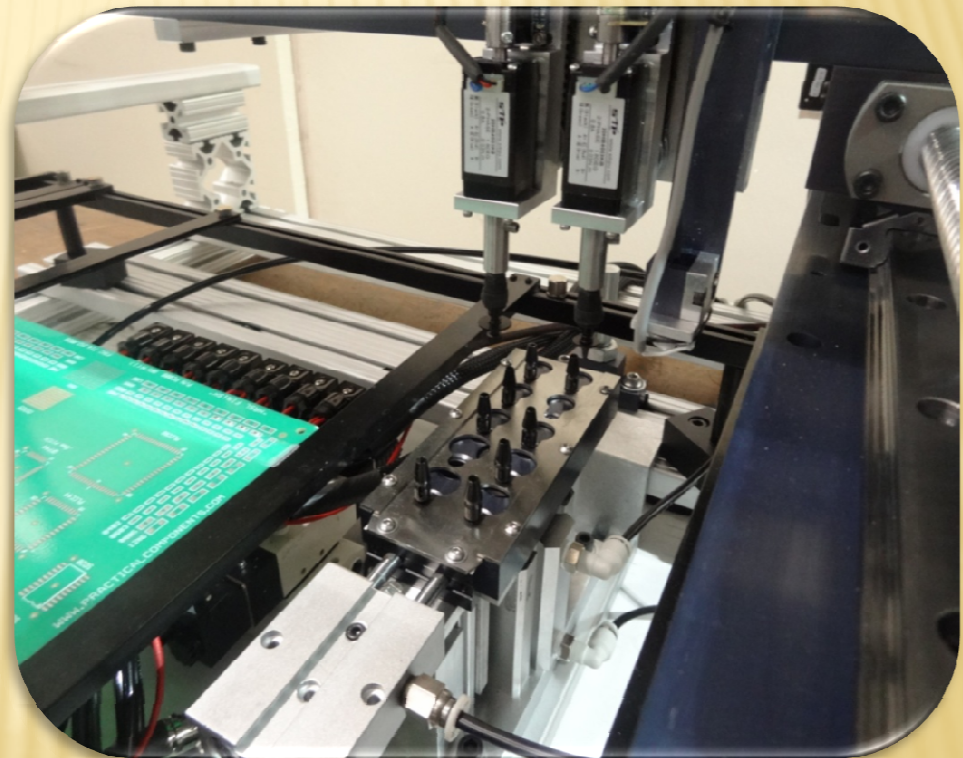


# QM2000

*Fully Automated Tabletop Pick & Place Machine*

## Two pick and place heads

Two Placement head with individual Z-axis controlled and programmable nozzle for single use standard.

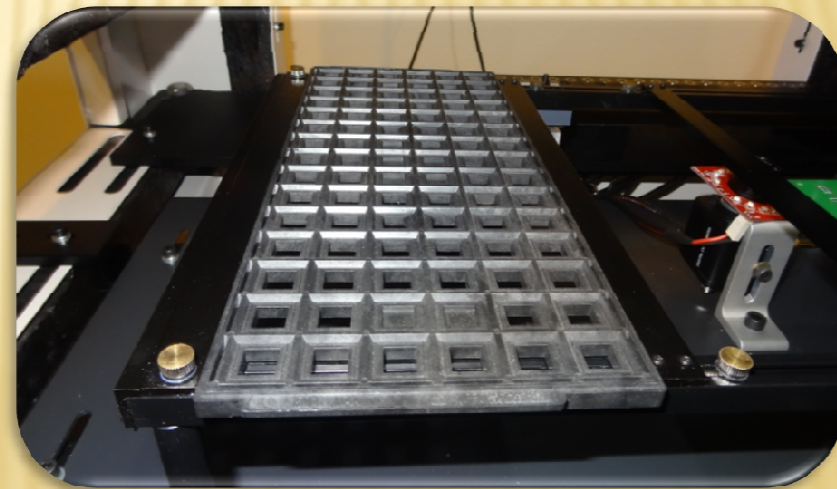
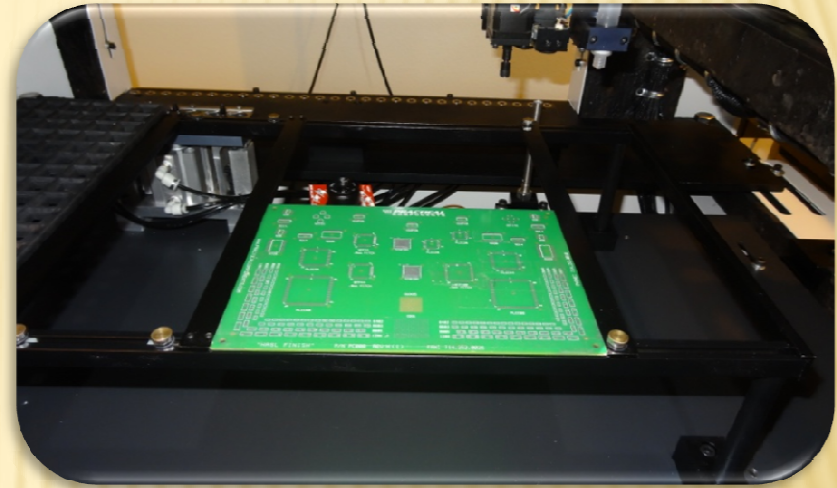
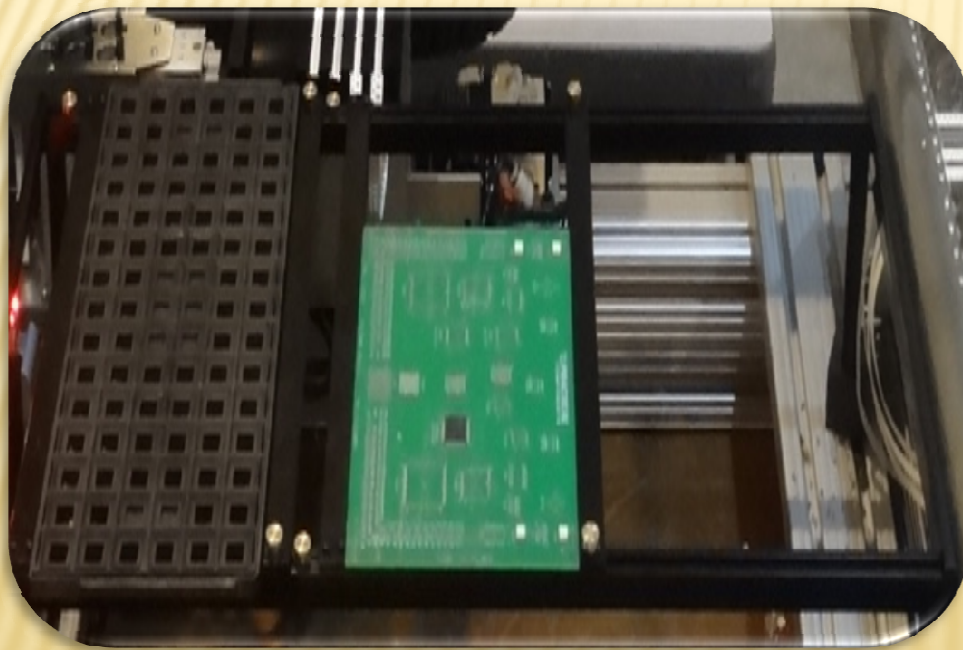


# QM2000

*Fully Automated Tabletop Pick & Place Machine*

## Static PCB & JEDEC Tray Fixture

Static Fixture standard with maximum adjusting size 20"(504mm)× 12"(304mm) and minimum size of 1"(25mm) x 1"(25mm) Dual arms capable of holding one JEDEC Tray once PCB depending on overall SMT board size. Maximum head travel area 36"(914mm)×20"(504mm) In line Conveyor is not optional for this model.



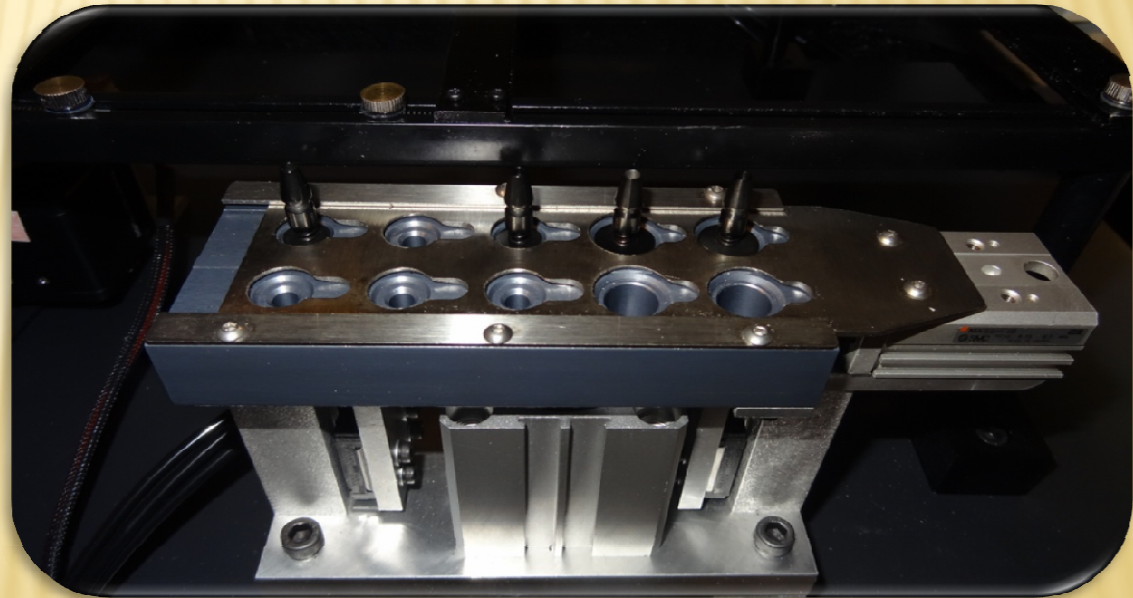
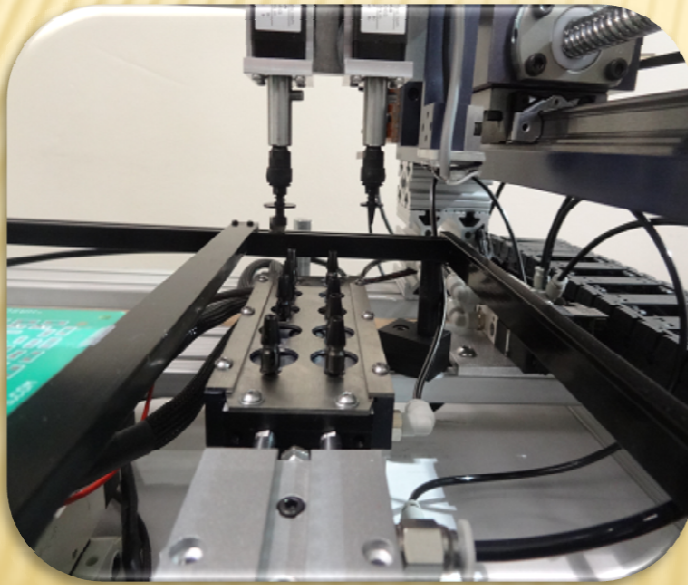
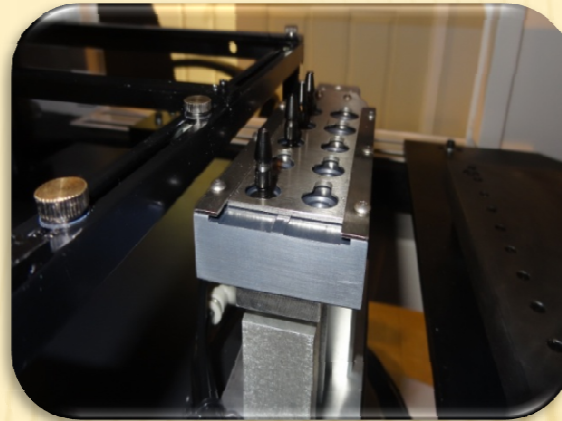


# QM2000

## Fully Automated Tabletop Pick & Place Machine

### Automatic nozzle Changer (optional)

The QM2000 is standard equipped with Ten SMT nozzles ranging from 0.5mm up to 5.0mm and one nozzle stem. The nozzle changer fixture is designed for automatic nozzle exchanging and is highly recommended for placement of difference size SMT components. It can be program by using the down looking camera and software to automatically place back current nozzle and pick up required nozzle for larger or smaller component.

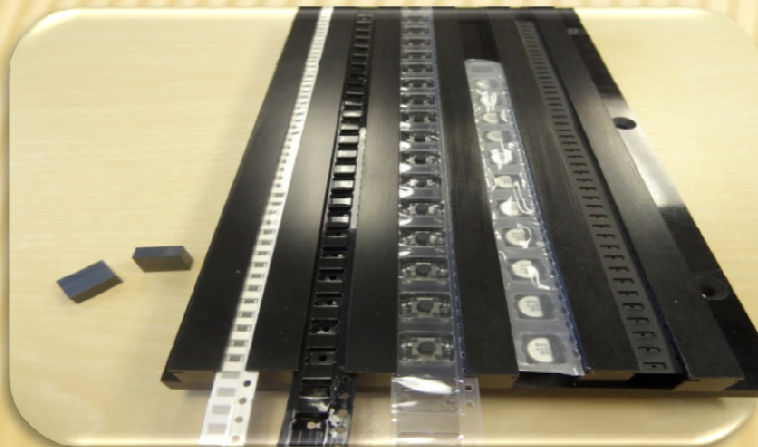
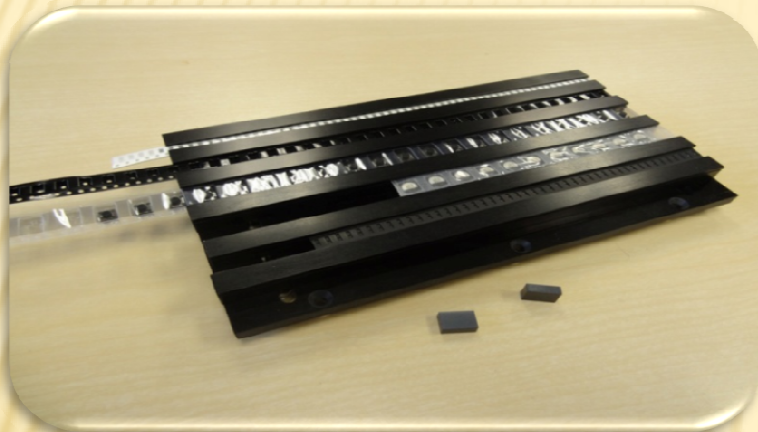


# QM2000

*Fully Automated Tabletop Pick & Place Machine*

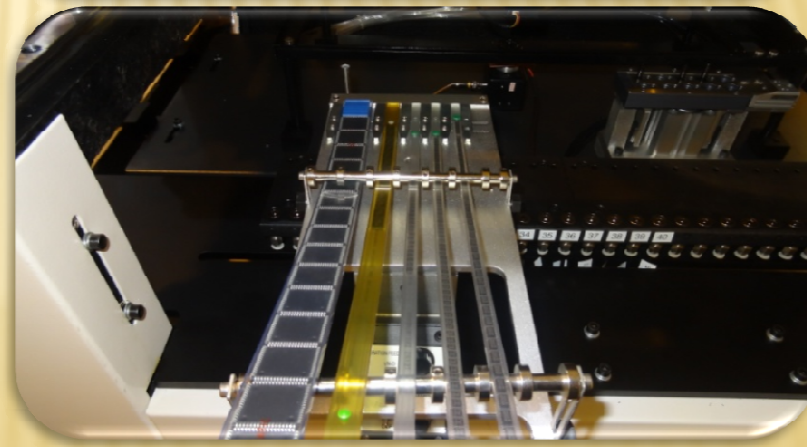
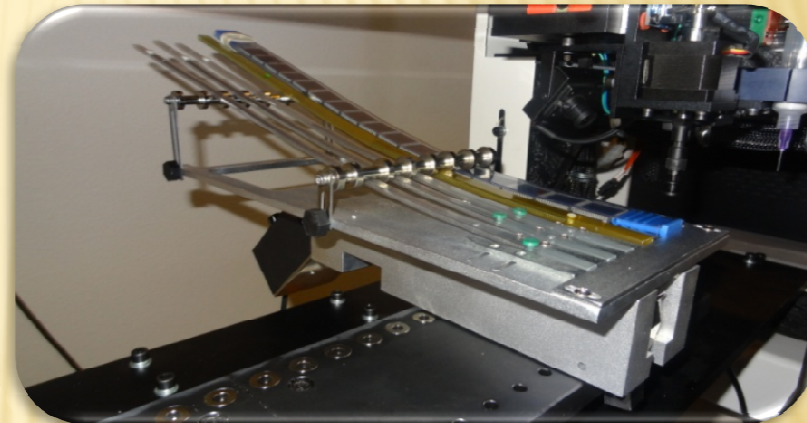
## Manual Tape strip feeder (Optional)

For small strips of SMD tape we offer a five channel tape strip feeder that can be adjusted to any width of tape.



## Vibratory Feeder (Optional)

For SMD components package in plastic tube, vibratory feeder can hold up to five tubes depending on tube width, each channel adjustable to any size.





# QM2000

## Fully Automated Tabletop Pick & Place Machine

### Pneumatic Feeders

Can hold up to 80 of our 8mm feeders, 40 Feeder bank ports are mounted on the left side of the machine, 20 additional feeder bank ports can be mounted on the front side, 20 more on the rear. Individual feeders sold separately, ranging from 8mm-56mm. Easy to remove and

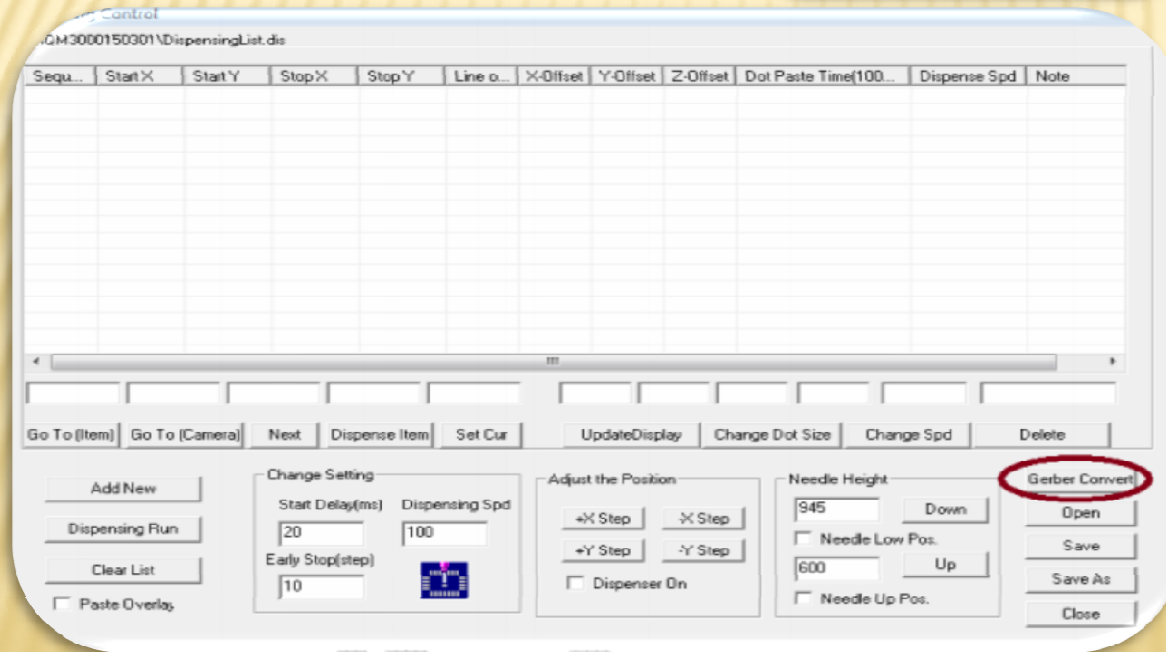
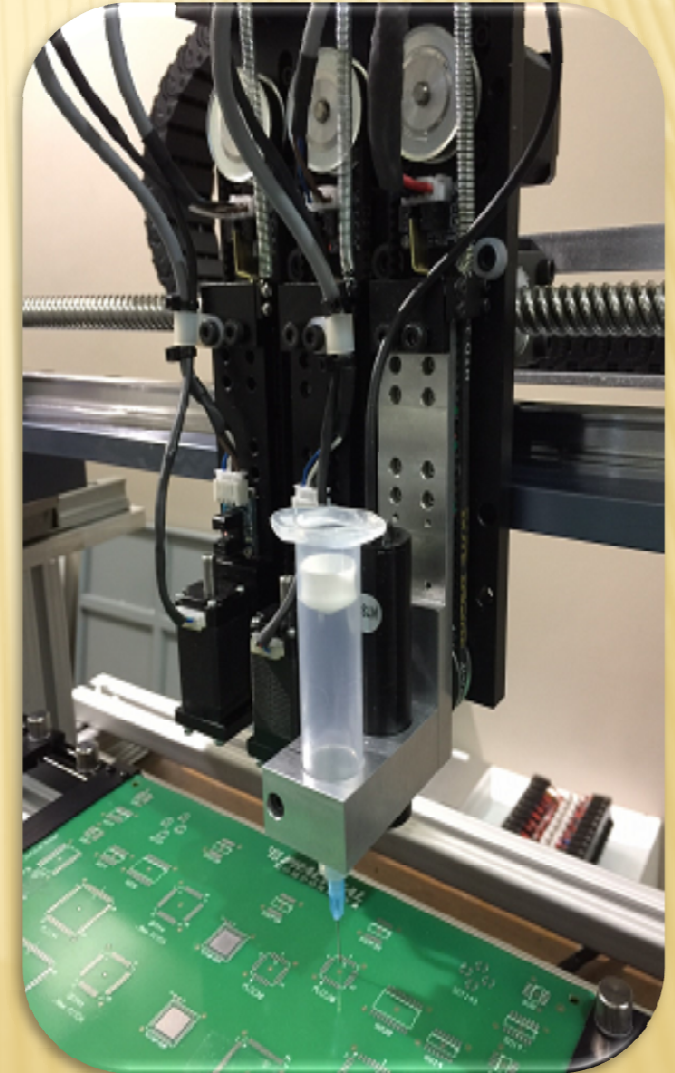
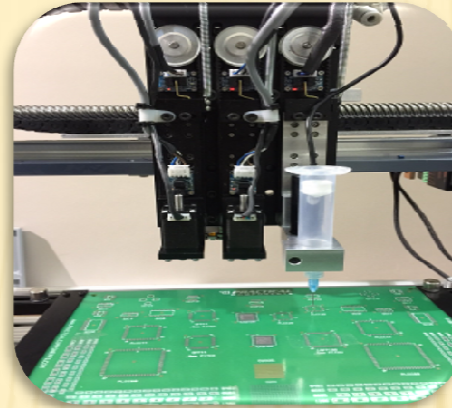


# QM2000

Fully Automated Tabletop Pick & Place Machine

## Dispensing Adaptor (Optional)

Dispensing head option for applying solder paste or SMD-glue, controlled by the SMTmax software! The PCB's Gerber file can be converted into a dispensing list file providing all dispense positions, can also be programmed one at a time by teach mode, recommended for prototyping. Dispensing can be done directly from the 10cc syringe by time pressure.





# QM2000

Fully Automated Tabletop Pick & Place Machine

## Specifications:

2 pick and place head Standard	3,00 PPH Placement Rate	0.0005" resolution X and Y axis	0.001" positioning resolution, 0.045° rotational resolution
0201 Minimum Component Size	Computer vision automatic centering system for IC's (SOP, QFP, BGA) and better placement of small parts included	20"(504mm)×12"(304mm) Maximum PCB fixture	20 pneumatic feeder ports
X & Y Axis standard with servo motors with encoder	1 JEDEC tray holder	12 month full factory warranty - parts & labor	110V AC 60Hz, or 220 V AC, 50Hz, 750 watts electrical
	65"w x 44"d x 21"h	MADE IN USA	



SMTmax Corporation  
5675 Kimball Ct  
Chino, CA 91710  
Phone: 909-393-8700  
[www.smtmax.com](http://www.smtmax.com)