

QM1500

FULLY AUTOMATED PICK & PLACE MACHINE



A Remarkable and Economical Pick & Place Machine Intended for Small Batches & SMT Prototype Projects.

Features and Benefits

- Teledyne DALSA Vision System
- 2 pick and place heads
- PCB Fixture max size 17"(431mm)×12"(304mm) capable of holding one JEDEC Tray once PCB.
- Operates with pneumatic feeders, 20 ports installed in the front side, 20 more ports optional (for rear side)
- One up looking camera for part inspection before placement.
- One Down looking camera for Fiducial Recognition & feeder set up.
- Placement rate 3,000 Parts Per Hour
- Dual Linear Guide Way and Ball Screws.
- Two day training included at SMTmax facility.



The QM1500 is a fully automated pick & place machine intended for SMT manufacturing and producing prototypes, developed by SMTmax. This remarkable, highly flexible and economical pick & place machine provides the need for a machine that produces small batches & prototypes for the SMT industry.

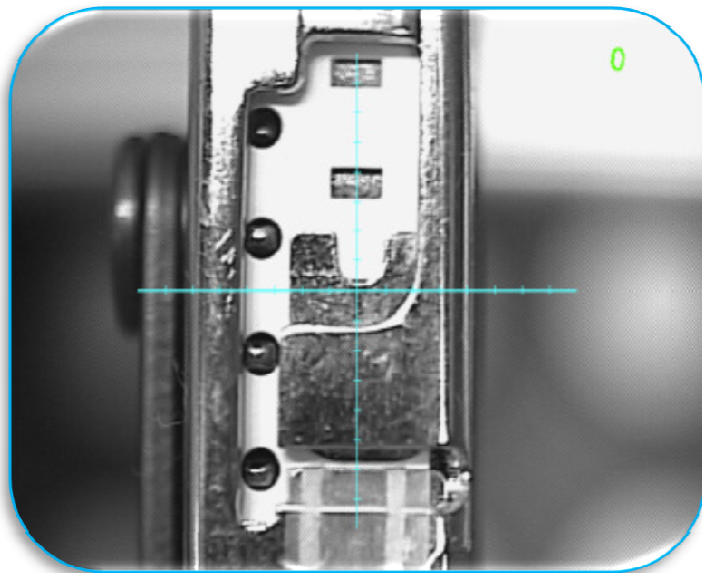
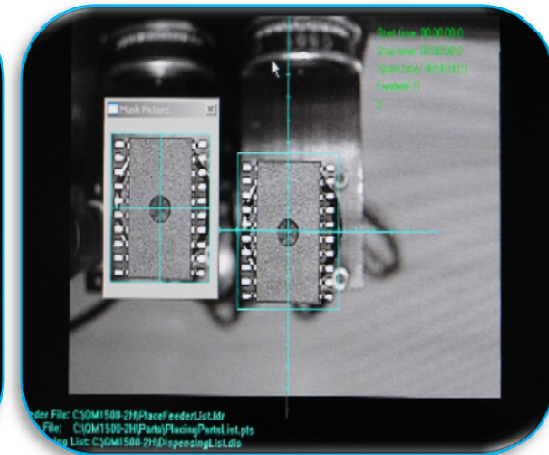
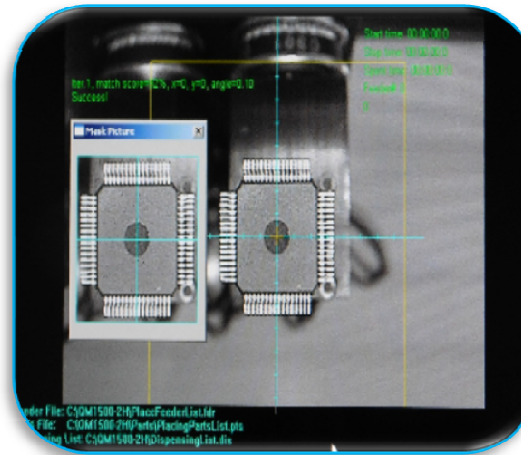


QM1500

Fully Automated Pick & Place Machine

High precision with Dalsa Vision system and camera

The QM1500 is standard equipped with the latest generation Dalsa Vision system, which gives you repeatability and alignment correction before placement. One down looking camera is standard for fiducial recognition and feeder alignment. One up looking camera is standard for part correction down to 0201. A second camera with larger lens for placement of large fine pitch components is optional.

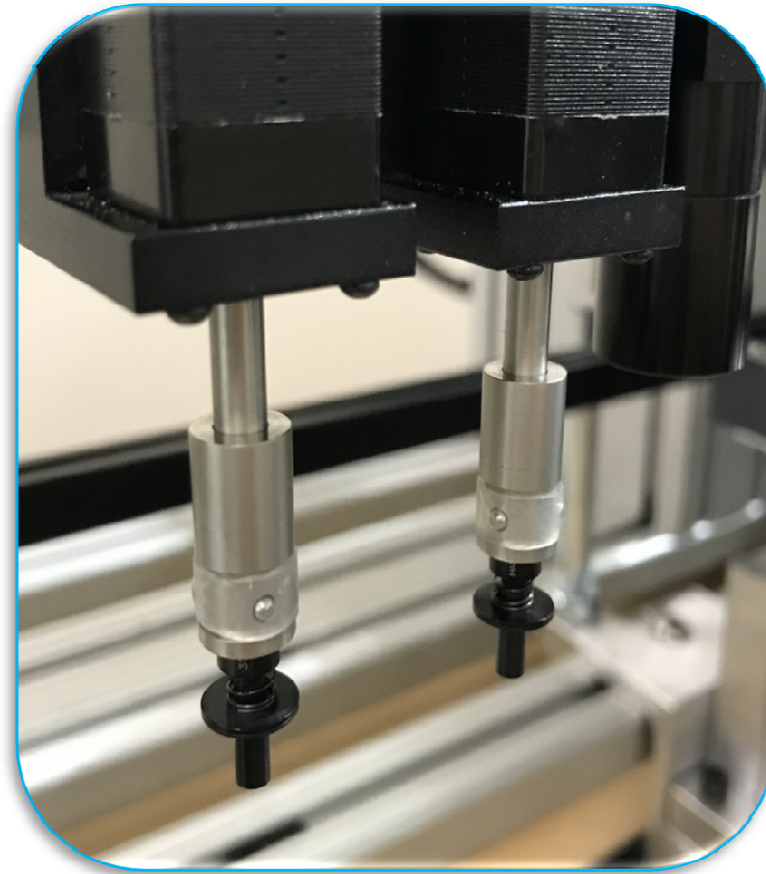
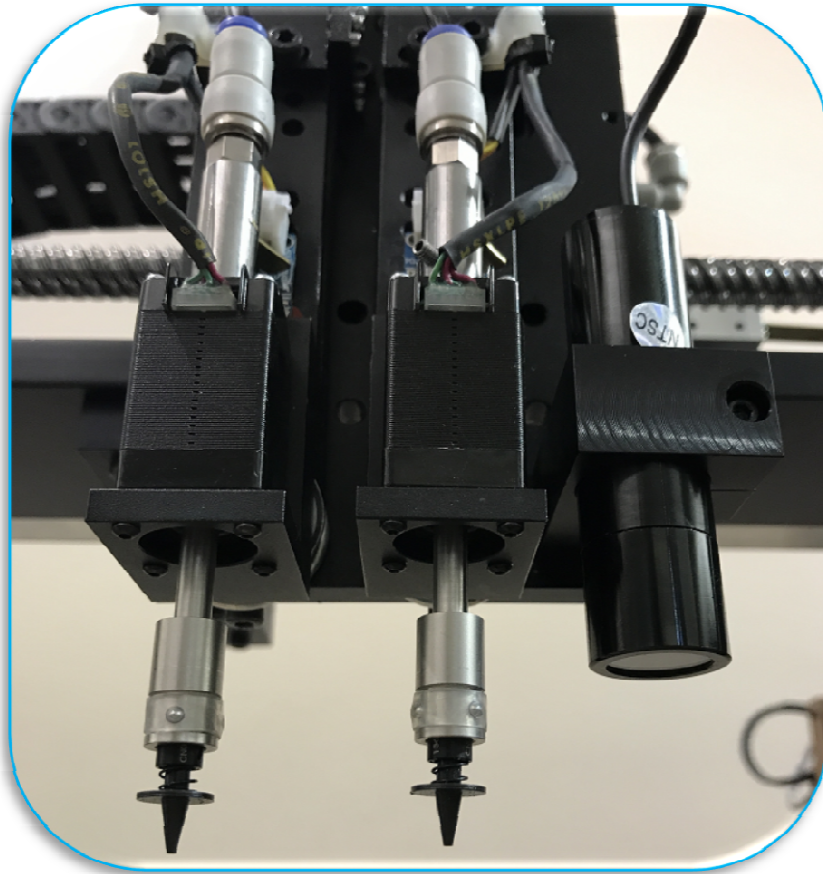


QM1500

Fully Automated Pick & Place Machine

Dual Head

Two Placement heads with individual Z-axis control.

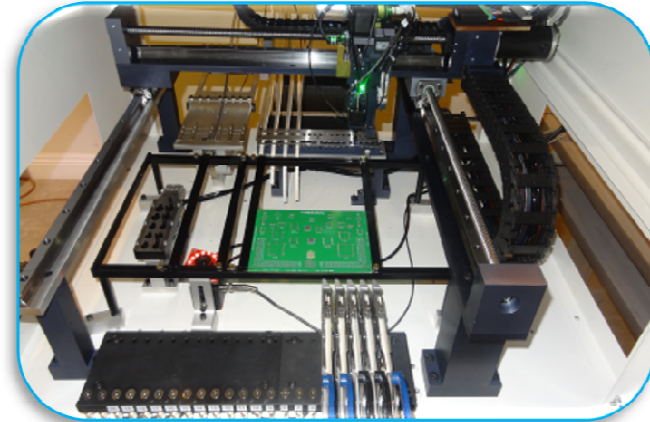
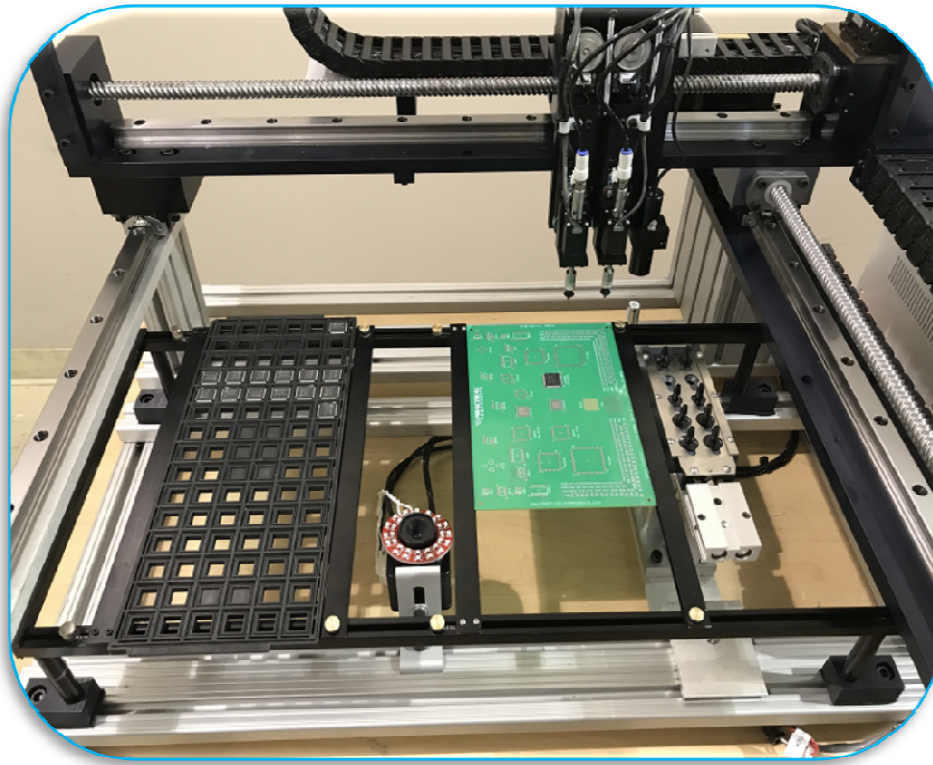


QM1500

Fully Automated Pick & Place Machine

Static PCB & JEDEC Tray Fixture

Static Fixture standard with maximum adjusting size 17"(431mm)× 12"(304mm) and minimum size of 1"(25mm) x 1"(25mm) Dual arms capable of holding one JEDEC Tray once PCB depending on overall SMT board size. Maximum head travel area 20"(500mm)×18"(460mm) In line Conveyor system is optional.

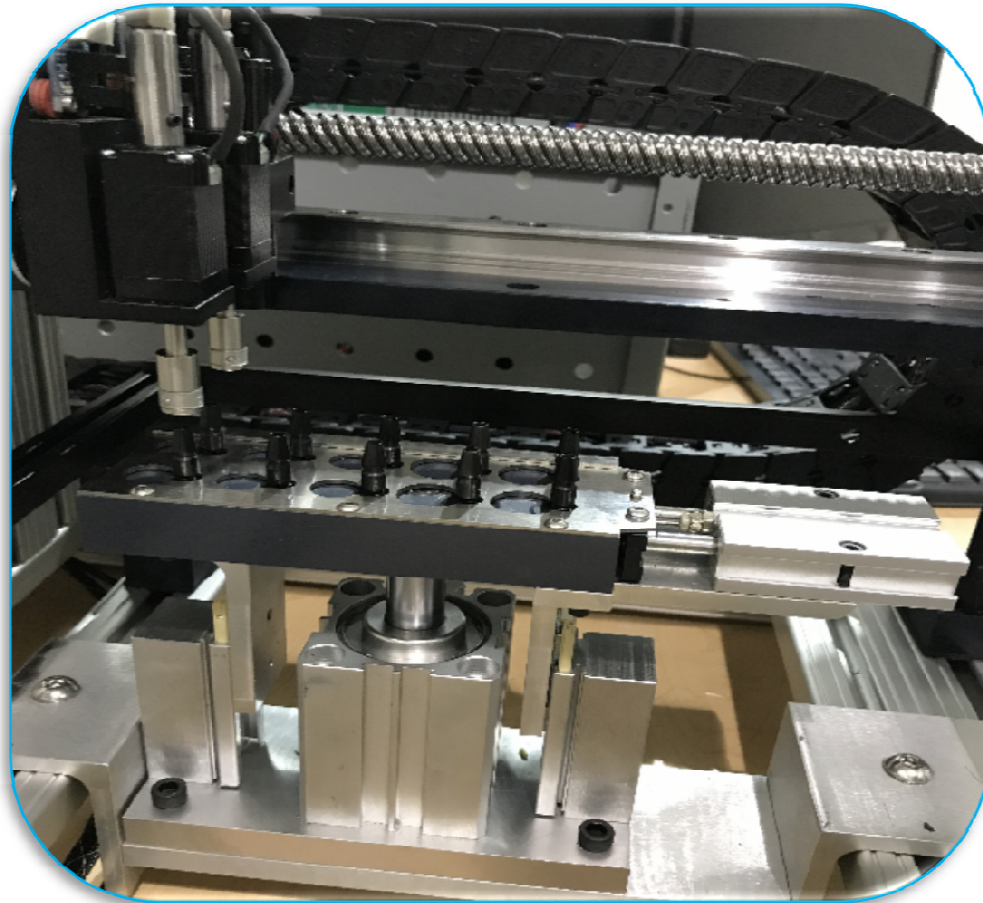
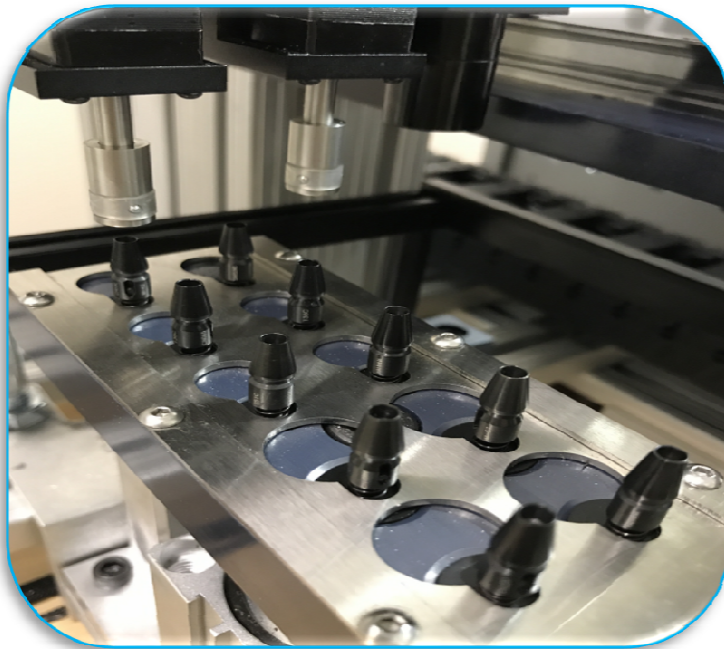


QM1500

Fully Automated Pick & Place Machine

Automatic nozzle Changer (optional)

The QM1500 is standard equipped with Ten SMT nozzles ranging from 0.5mm up to 5.0mm and one nozzle stem. The nozzle changer fixture is designed for automatic nozzle exchanging and is highly recommended for placement of difference size SMT components. It can be program by using the down looking camera and software to automatically place back current nozzle and pick up required nozzle for larger or smaller component.

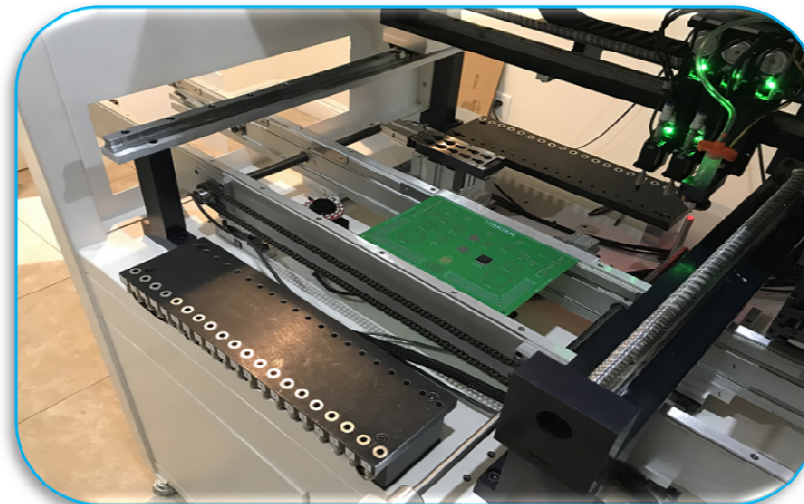
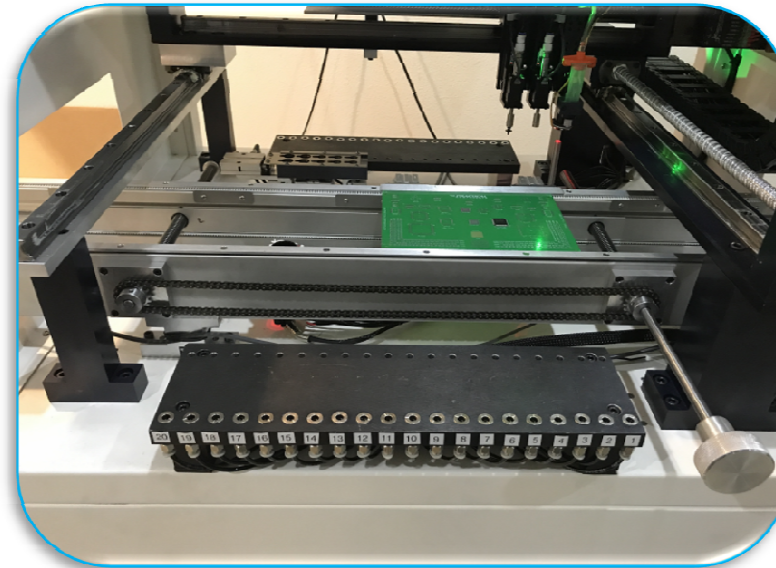


QM1500

Fully Automated Pick & Place Machine

PCB Inline Transport Conveyor (Optional)

The inline transporting conveyor is ideal for full turn key line that will allow you to link up to a inline stencil printer or inline reflow oven. PCB is inserted on the right side and will automatically convey to the center of the pick and place, after completion it will convey outside. Width is adjustable and can be opened up to 8" (203mm) and the maximum length of 17" (431mm)

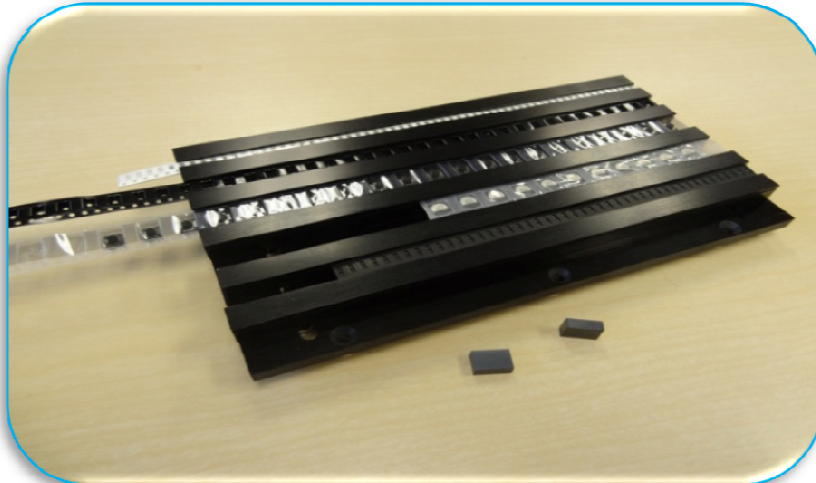
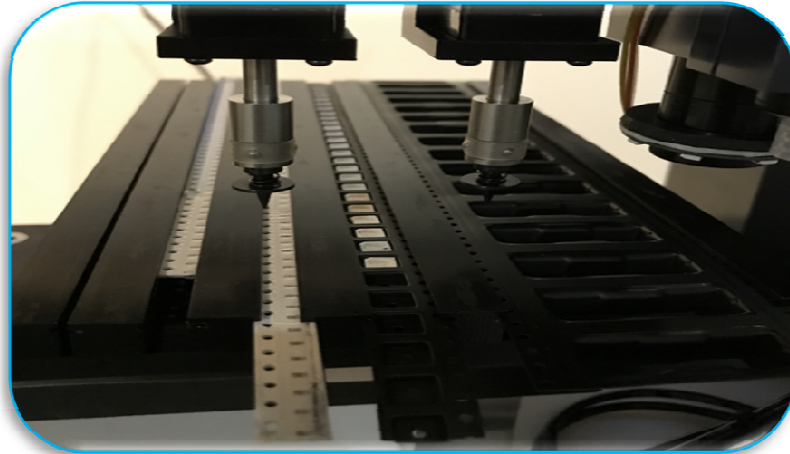


QM1500

Fully Automated Pick & Place Machine

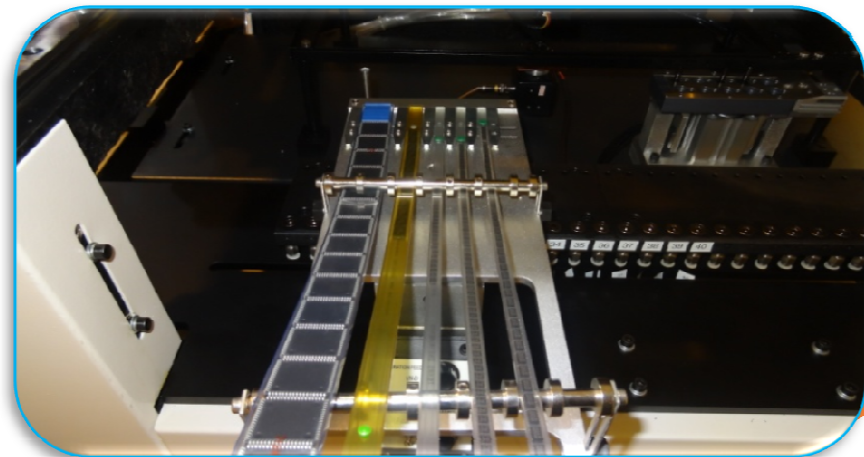
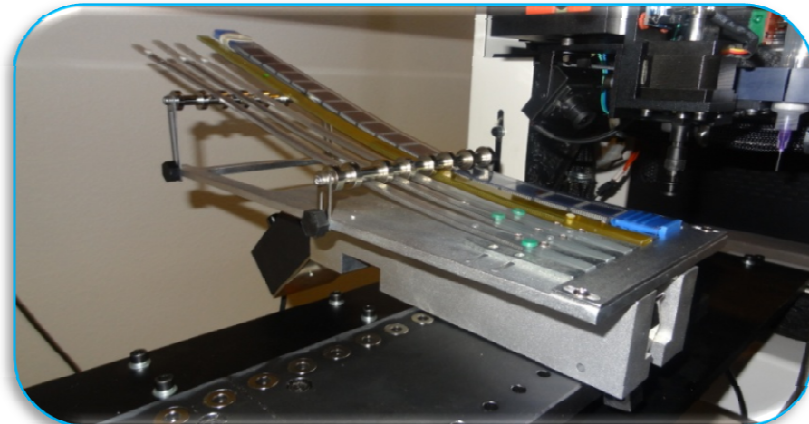
Manual Tape strip feeder (Optional)

For small strips of SMD tape we offer a five channel tape strip feeder that can be adjusted to any width of tape.



Vibratory Feeder (Optional)

For SMD components package in plastic tube, vibratory feeder can hold up to five tubes depending on tube width, each channel adjustable to any size.

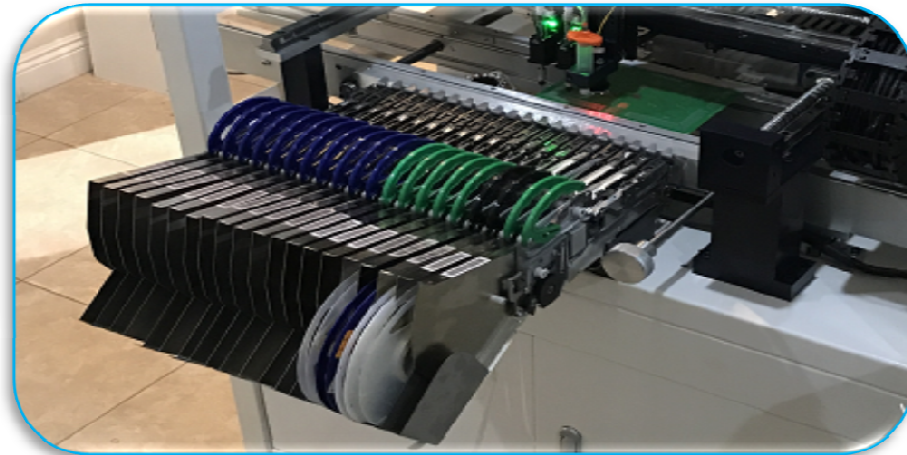
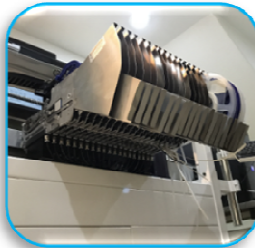


QM1500

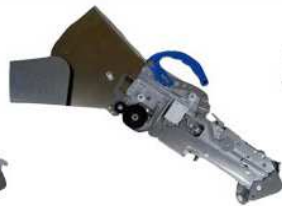
Fully Automated Pick & Place Machine

20 Air Actuated Feeder ports and controller included, feeders are sold separately (in rear of the machine)

Can hold up to 40 of our 8mm feeders. 20 Feeder bank port included and mounted on the front side of the machine, 20 additional feeder bank port can be mounted on the rear side. Individual feeders sold separately, ranging from 8mm-56mm. Easy to remove and replace.



Yamaha CL823 0201



Yamaha CL8x2



Yamaha CL8x4



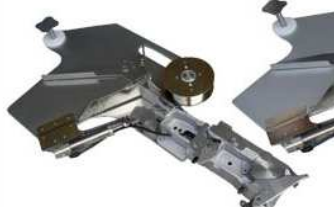
Yamaha CL24mm



Yamaha CL16mm



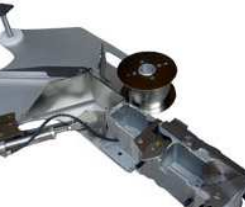
Yamaha CL12mm



Yamaha CL32mm



Yamaha CL44mm



Yamaha CL56mm

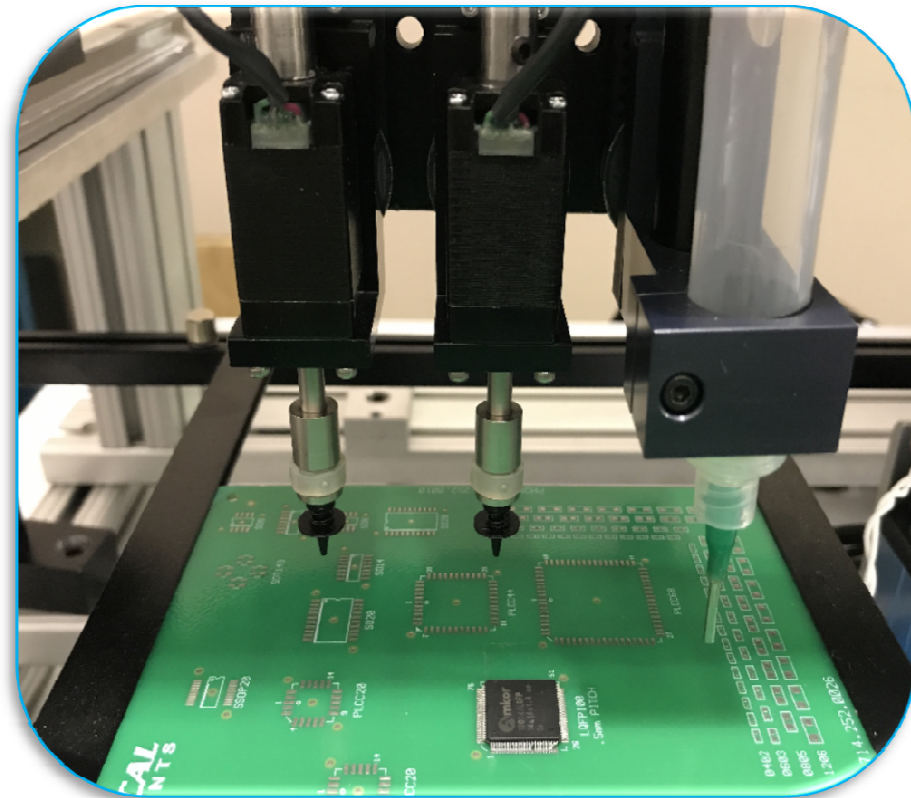
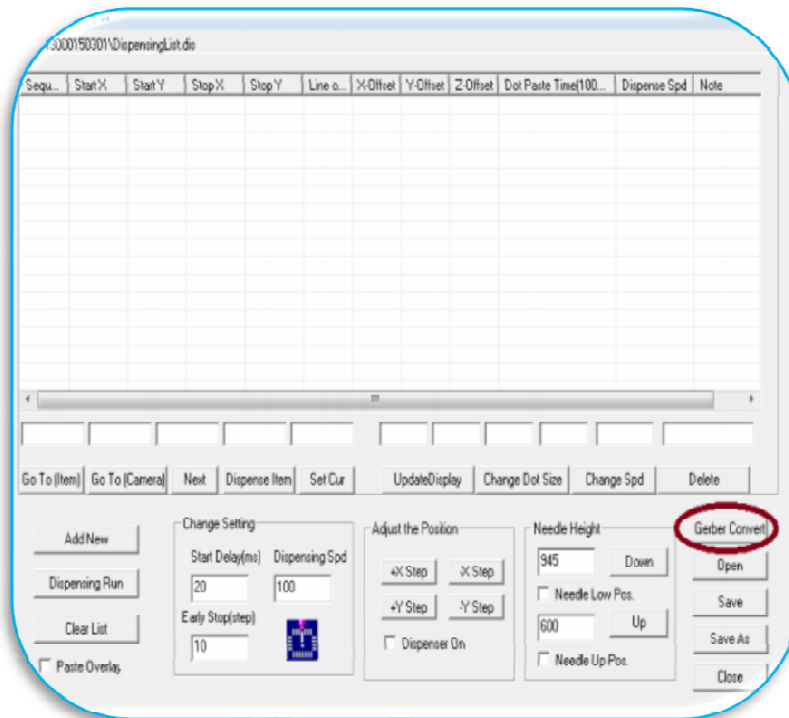


QM1500

Fully Automated Pick & Place Machine

Dispensing Adaptor (Optional)

Dispensing head option for applying solder paste or SMD-glue, controlled by the SMTmax software! The PCB's Gerber file can be converted into a dispensing list file providing all dispense positions, can also be programmed one at a time by teach mode, recommended for prototyping. Dispensing can be done directly from the 10cc syringe by time pressure.



QM1500

Fully Automated Pick & Place Machine

Specificatio

2 pick and place heads
Standard

3,00 PPH Placement Rate

0.0005" resolution X and Y
axis

0.001" positioning
resolution, 0.045°
rotational resolution

0201 Minimum
Component Size

Computer vision
automatic centering
system for IC's (SOP, QFP,
BGA) and better
placement of small parts
included

17" (431mm) x 12"
(304mm) Maximum PCB
fixture

Pneumatic feeders
20 feeder ports ready to
go, 20 additional optional

X & Y Axis standard with
servo motors with
encoder

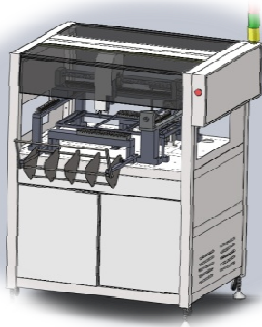
1 JEDEC tray holder

12 month full factory
warranty - parts & labor

110V AC 60Hz, or 220 V
AC, 50Hz, 750 watts
electrical

38" w x 40" d x 42" h

MADE IN USA



SMTmax

*SMTmax
Corporation
5675 Kimball Ct
Chino, CA 91710
Phone: 909-393-8700*

www.smtmax.com

