

QM1100-A

FULLY AUTOMATED TABLETOP PICK & PLACE MACHINE



A remarkable and economical Pick & Place machine intended for small batches & SMT prototype projects.

Features and Benefits

- Teledyne DALSA Vision System
- Two Heads for pick up
- PCB Fixture max size 12"(304mm)×12"(304mm) capable of holding one JEDEC Tray once PCB.
- Operates with pneumatic feeders, 20 ports installed in the front side, 20 more ports optional (for rear side)
- One up looking camera for part inspection before placement.
- One Down looking camera for Fiducial Recognition & feeder set up.
- Placement rate 3,000 Parts Per Hour
- Paste dispenser option available, for Auto dispensing
- Dual linear guide way with Ball Screws.
- Two day training session at SMTmax included



The QM1100-A is a fully automated pick & place machine intended for SMT manufacturing and producing prototypes, developed by SMTmax. This remarkable, highly flexible and economical pick & place machine provides the need for a machine that produces small batches & prototypes for the SMT industry.

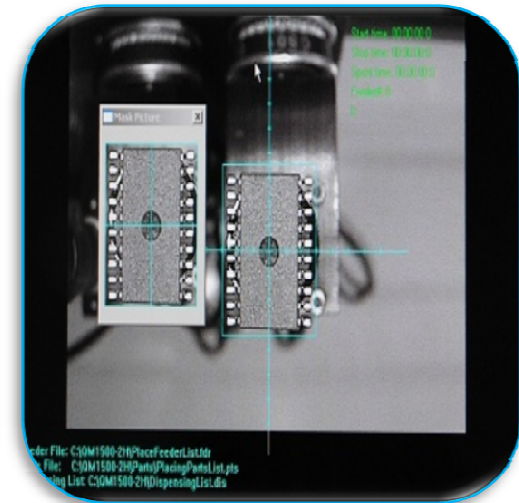
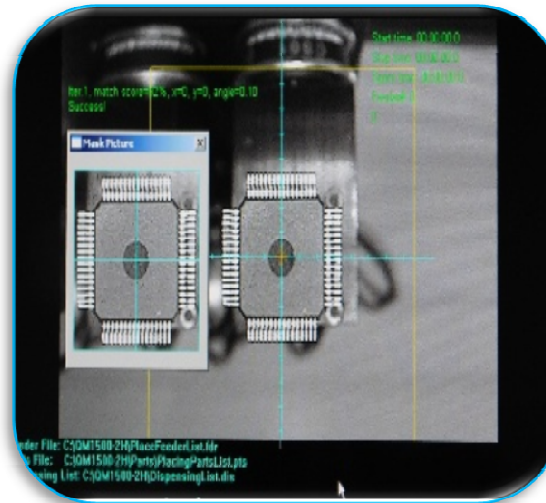
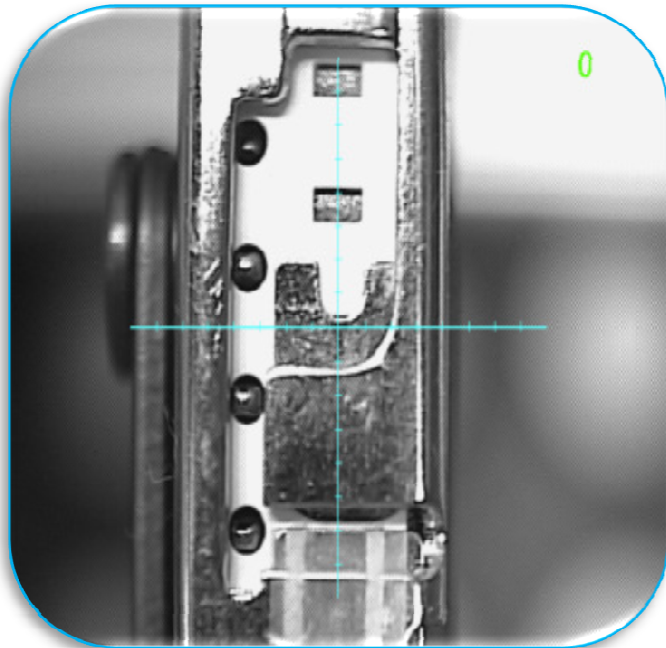


QM1100-A

Fully Automated Tabletop Pick & Place Machine

High precision with Dalsa Vision system and camera

The QM1100-A is standard equipped with the latest generation Dalsa Vision system, which gives you repeatability and alignment correction before placement. One down looking camera is standard for fiducial recognition and feeder alignment. One up looking camera is standard for part correction down to 0201. A second camera with larger lens for placement of large fine pitch components is optional.

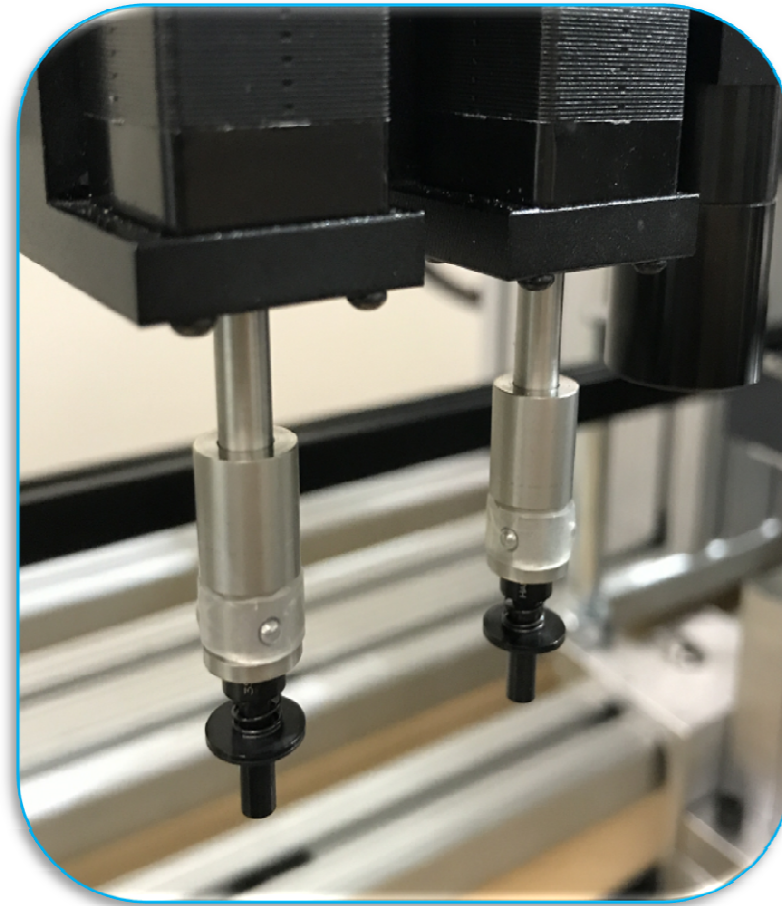
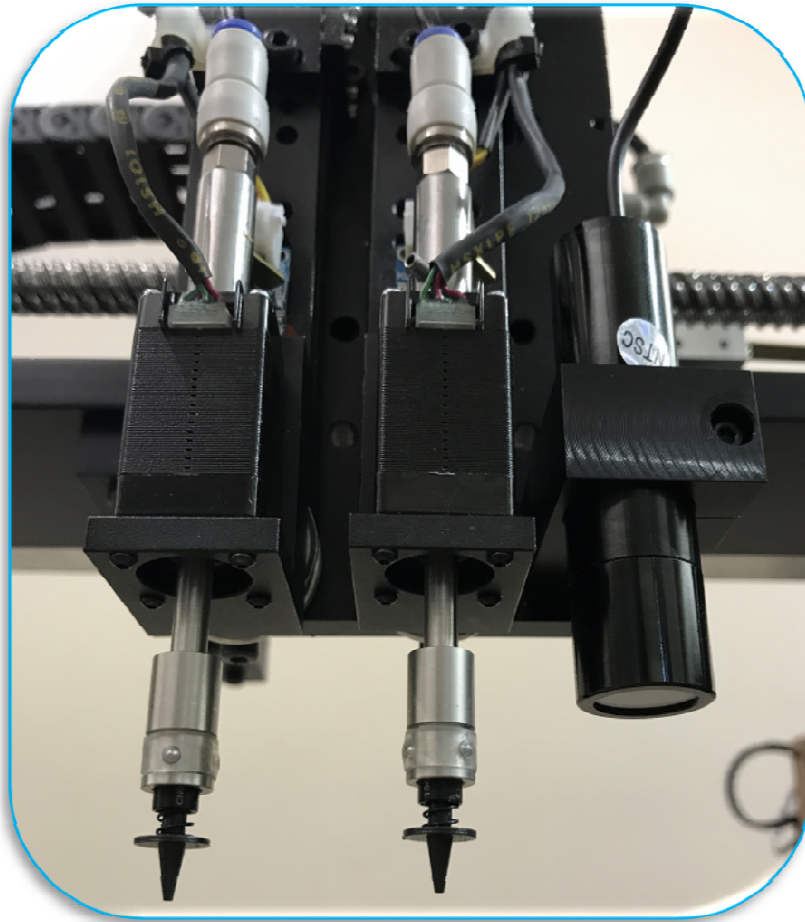


QM1100-A

Fully Automated Tabletop Pick & Place Machine

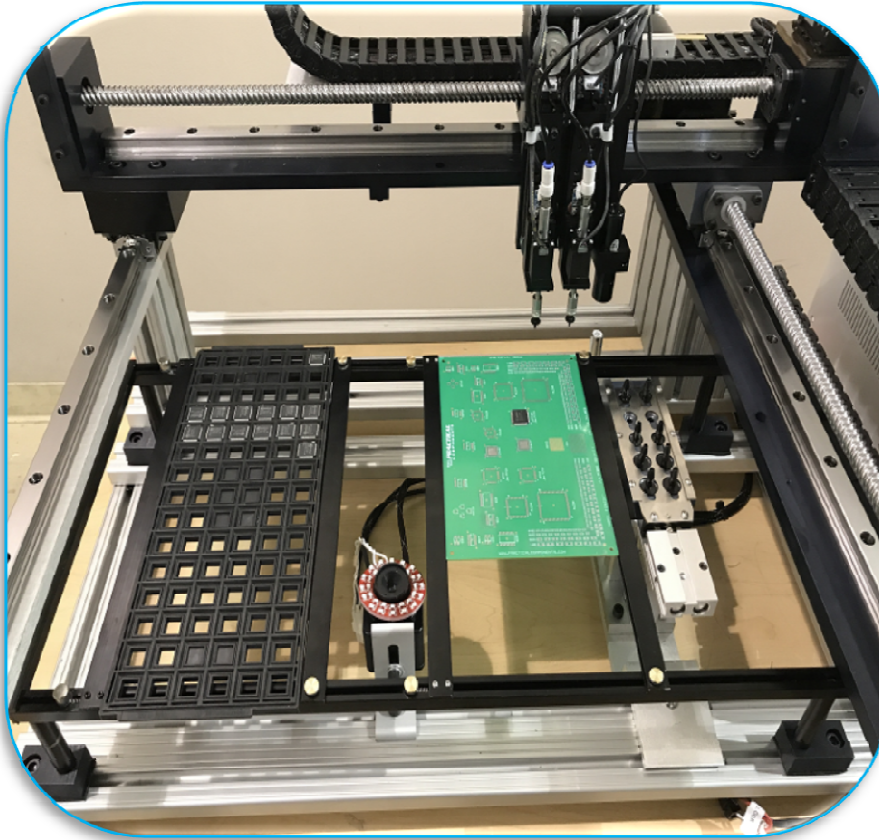
Two Head Placement

Two Placement heads with individual Z-axis control.



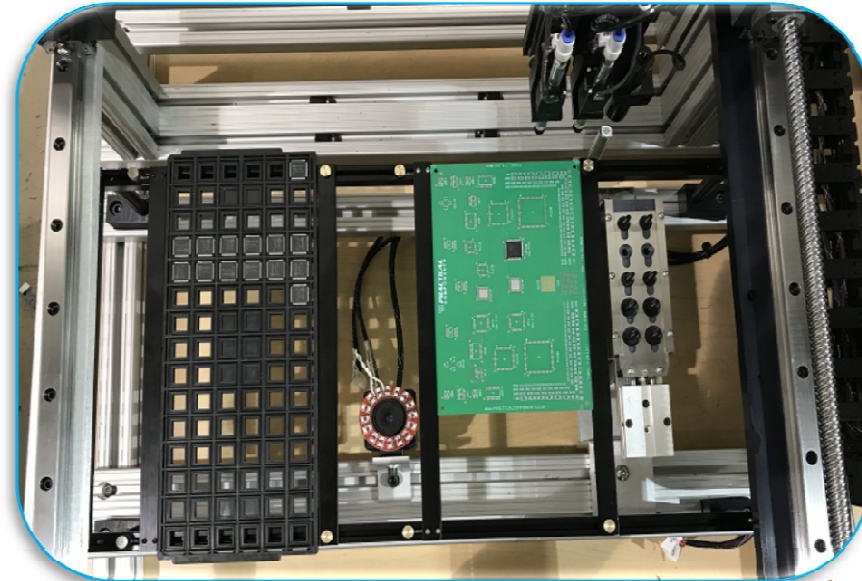
QM1100-A

Fully Automated Tabletop Pick & Place Machine



Static PCB & JEDEC Tray Fixture

Static Fixture standard with maximum adjusting size 12"(304mm)× 12"(304mm) and minimum size of 1"(25mm) x 1"(25mm) Dual arms capable of holding one JEDEC Tray once PCB depending on overall PCB board size. Maximum head travel area 13"(330mm)×15"(381mm) In line Conveyor system is not optional.



QM1100-A

Fully Automated Tabletop Pick & Place Machine

Pneumatic Feeders

The QM1100-A is standard equipped with a set of 20 feeder port carriers, mounted on the front side of the machine, each port can fit one single 8mm feeder, larger size feeders may take more space away, additional set of 20 feeder ports can be added to the rear of the machine for an additional cost. Feeders are not included and sold separately.



20 Additional ports



20 ports included

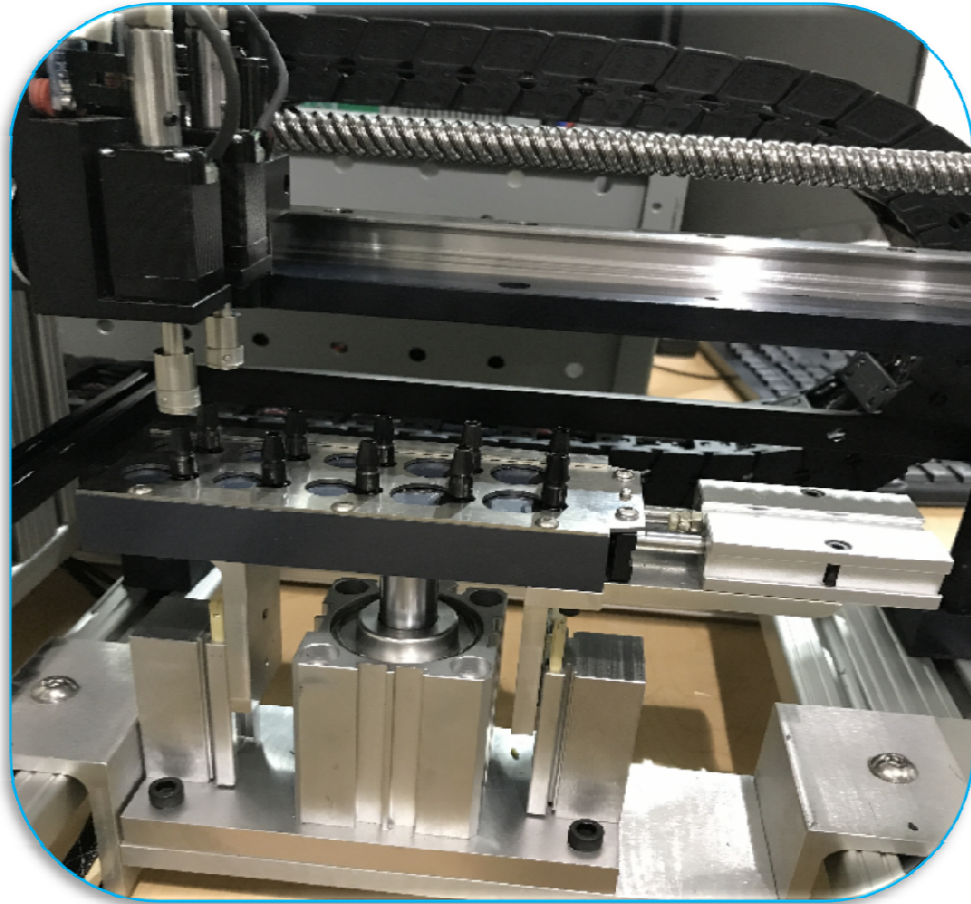
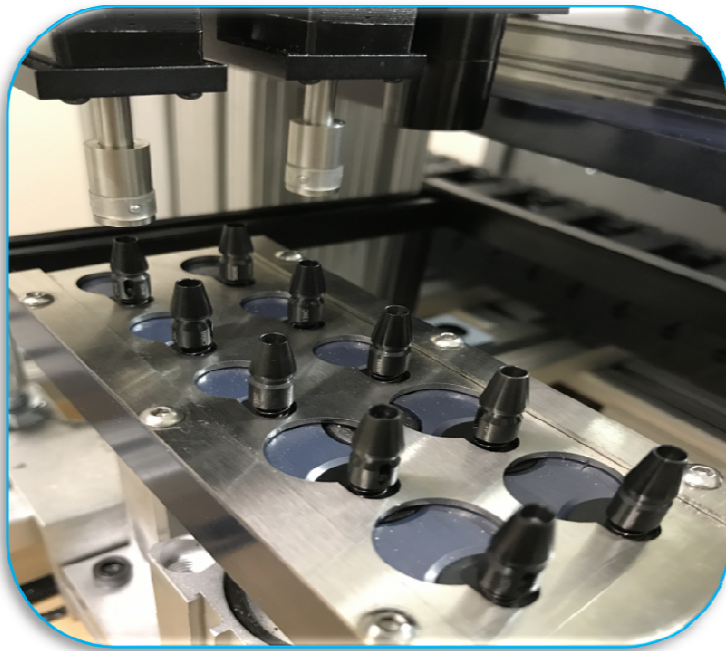


QM1100-A

Fully Automated Tabletop Pick & Place Machine

Automatic nozzle Changer (optional)

The QM1100-A is standard equipped with Ten SMT nozzles ranging from 0.5mm up to 5.0mm and one nozzle stem. The nozzle changer fixture is designed for automatic nozzle exchanging and is highly recommended for placement of difference size SMT components. It can be program by using the down looking camera and software to automatically place back current nozzle and pick up required nozzle for larger or smaller component.

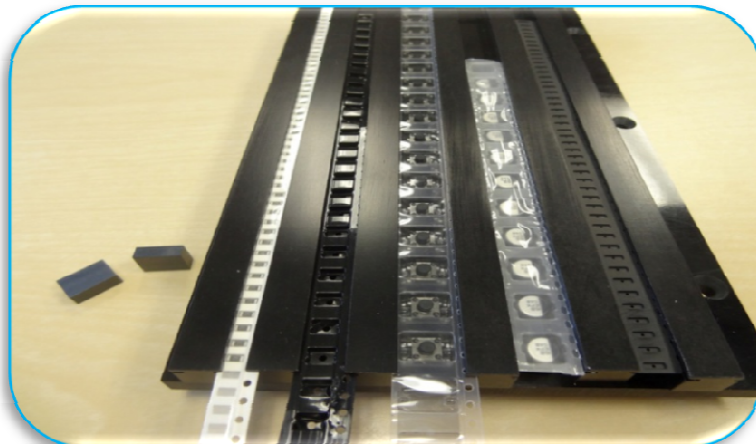
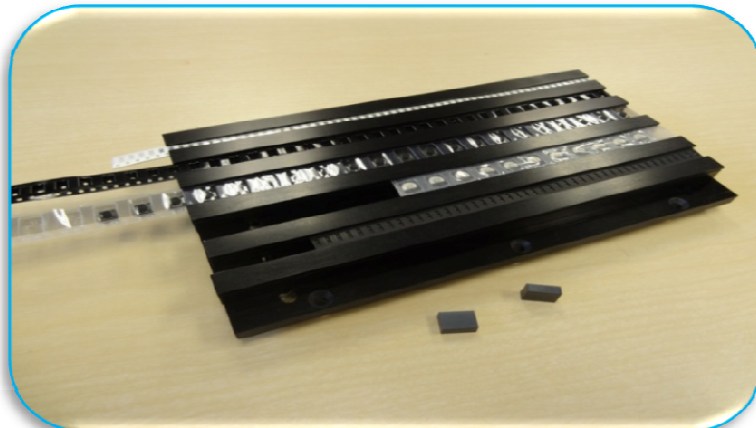


QM1100-A

Fully Automated Tabletop Pick & Place Machine

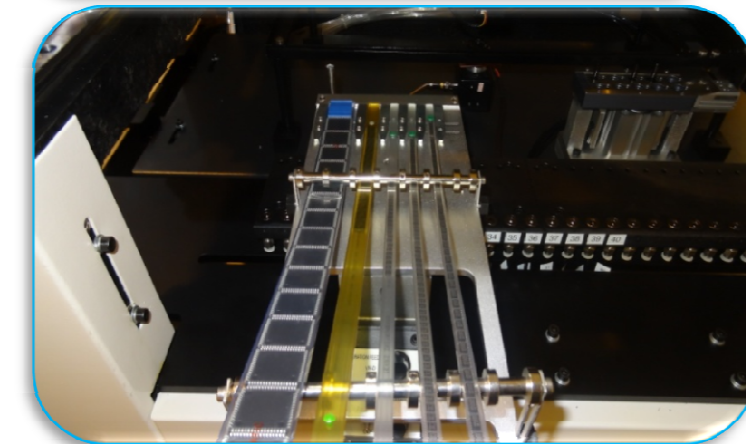
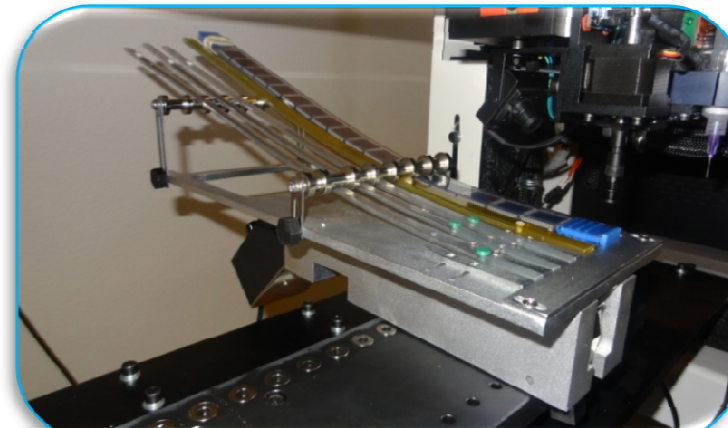
Manual Tape strip feeder (Optional)

For small strips of SMD tape we offer a five channel tape strip feeder that can be adjusted to any width of tape.



Vibratory Feeder (Optional)

For SMD components package in plastic tube, vibratory feeder can hold up to five tubes depending on tube width, each channel adjustable to any size.

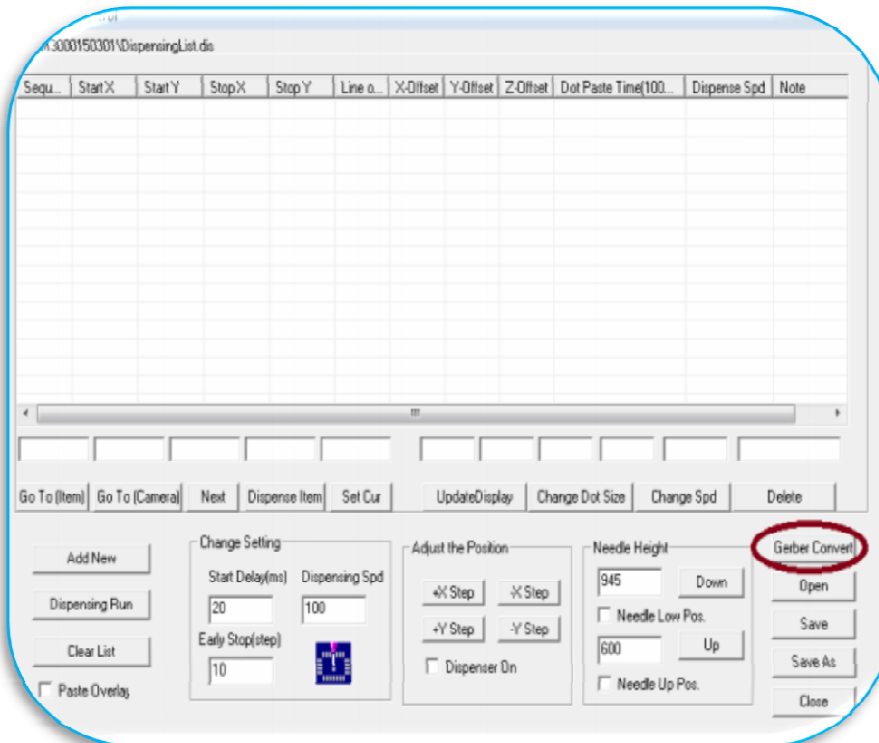
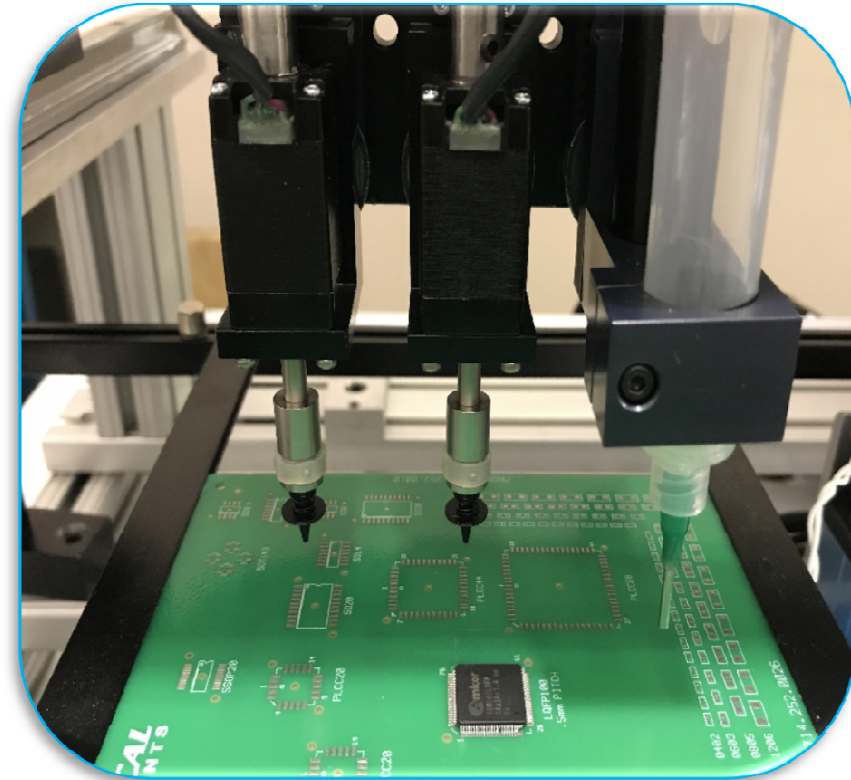


QM1100-A

Fully Automated Tabletop Pick & Place Machine

Dispensing Adaptor (Optional)

Dispensing head option for applying solder paste or SMD-glue, controlled by the SMTmax software! The PCB's Gerber file can be converted into a dispensing list file providing all dispense positions, can also be programmed one at a time by teach mode, recommended for prototyping. Dispensing can be done directly from the 10cc syringe by time pressure.



QM1100-A

Fully Automated Tabletop Pick & Place Machine

Specifications:

2 pick and place head Standard	3,00 PPH Placement Rate	0.0005" resolution X and Y axis	0.001" positioning resolution, 0.045° rotational resolution
0201 Minimum Component Size	Computer vision automatic centering system for IC's (SOP, QFP, BGA) and better placement of small parts included	12"(304mm)× 12"(304mm) Maximum PCB fixture	Pneumatic feeders 20 feeder ports ready to go, 20 additional optional
X & Y Axis standard with servo motors with encoder	1 JEDEC tray holder	12 month full factory warranty - parts & labor	110V AC 60Hz, or 220 V AC, 50Hz, 750 watts electrical
	37" w x 38" d x 19" h	MADE IN USA	



SMTmax Corporation
5675 Kimball Ct
Chino, CA 91710
Phone: 909-393-8700
www.smtmax.com

